

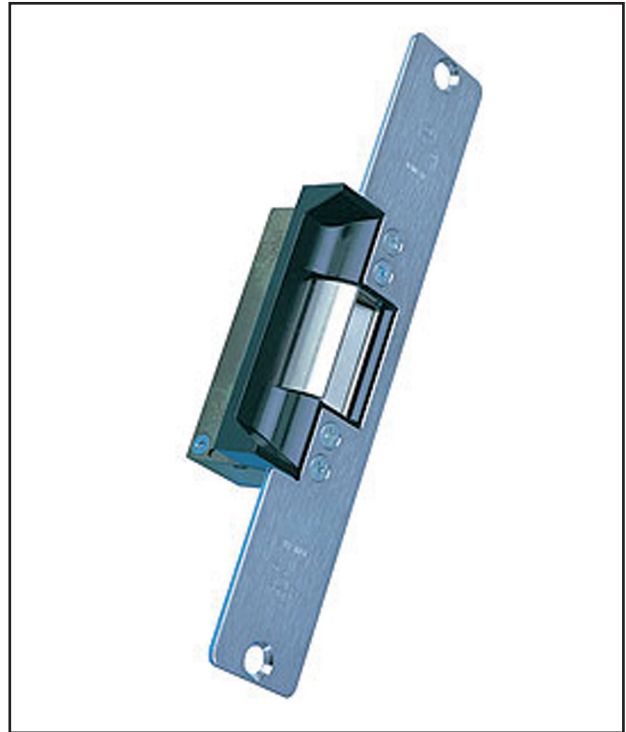
7110 and 7111

Electric Strike for Single or Double Leaf Timber or Steel Doors



The Adams Rite 7100 Series is for remote use access control of any door equipped with Adams Rite 4700 series (or similar) deadlatch

The 7110 and 7111 electric strike have flat faceplates for mounting in the frame or the inactive leaf of a pair of doors.



Key Benefits

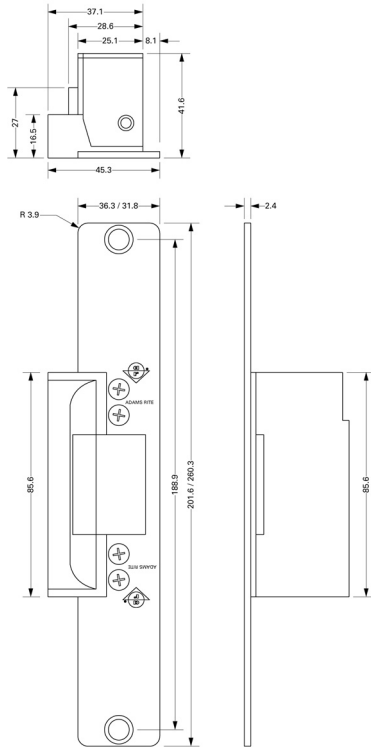
- Suitable for use on timber and steel doors
- The compact mechanism fits into a timber or steel jamb section as shallow as 44.45mm
- Electrical actuation unlocks the strike jaw, releasing the latchbolt so the door can be opened without operating the latch itself
- The 7110 has a 201mm long faceplate and the 7111 has a 260mm faceplate for installation into timber and steel doors
- 907kg holding force (2000lbs)
- Facility to change duty from fail-safe to fail-secure and vice-versa
- Non-handed

Related Hardware

RiteKey Keypad ~ Push-to-Exit Button ~ Power Supply Unit ~ 4720ANSI Deadlatch

Note: For out of hours security specify the Sentinel 6 Deadlock in conjunction with the electric strike/latch combination.

Dimensions



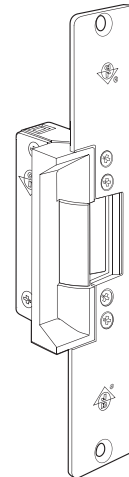
Specifications

Current Draw:	12vAC=1.48A, 12vDC=0.332A, 24vAC=0.74A, 24vDC=0.19A (nominal). DC intermittent and continuous units are silent, AC intermittent units "buzz" on operation.
Voltage Tolerance:	±10%.
Powered By:	Internal solenoid.
Monitoring:	(Optional) Single: Latch only, Double: Latch & solenoid.
Duty:	Fail-safe or fail-secure (convertible without additional parts). DC power supply required for fail-safe operation.
Jaw Strength:	907kg (2000lbs).
Case:	85.6mm x 28.6mm x 41.6mm. Zinc aluminium alloy.
Mechanism:	Stainless steel internal blocking mechanism.
Strike Opening:	36.5mm x 15.9mm x 12.7mm. Stainless steel bolt retainer jaw.
Door Gap:	Minimum 3mm (1/8"), operational door gap 3-5mm.
Faceplate:	Aluminium. 201.6mm x 36.3mm (7110), 260.3mm x 36.3mm (7111).
Finishes:	See ordering codes.
Subcover:	Basic subcover lip will suit a 44.45mm (1 3/4") thick door that closes flush with jamb edge. For extended bolt-on subcovers see ordering codes.
Standards:	ANSI/BHMA 156.5 Grade 1. UL Listed for burglary resistance.

Ordering Codes Matrix

7110 - 3 1 0 - 652 - 1

Model Number	7110 8" Faceplate	7111 10" Faceplate
Voltage	3 12 volt	5 24 volt
Current and Duty	1 DC Continuous or intermittent	4 AC Intermittent (fail-secure only)
Features	0 Standard/Fail-Secure	5 Standard/Fail-Safe
	7 Monitored/Fail-Safe	9 Monitored/Fail-Secure
Finish	652 Satin Chrome	
Options	1 Single Monitoring (Latch only)	2 Double Monitoring (Latch and Solenoid)



Subcover Extension Codes (order separately)

Order Code	Dimension*	Order Code	Dimension*
91-0171-01	38.1mm (1.50")	91-0171-08	60.5mm (2.38")
91-0171-02	41.4mm (1.63")	91-0171-09	63.5mm (2.50")
91-0171-03	44.5mm (1.75")	91-0171-10	66.8mm (2.63")
91-0171-04	47.8mm (1.88")	91-0171-11	69.9mm (2.75")
91-0171-05	50.8mm (2.00")	91-0171-12	73.2mm (2.88")
91-0171-06	54.1mm (2.13")	91-0171-13	76.2mm (3.00")
91-0171-07	57.2mm (2.25")		

*Dimension from door centreline to jamb edge.