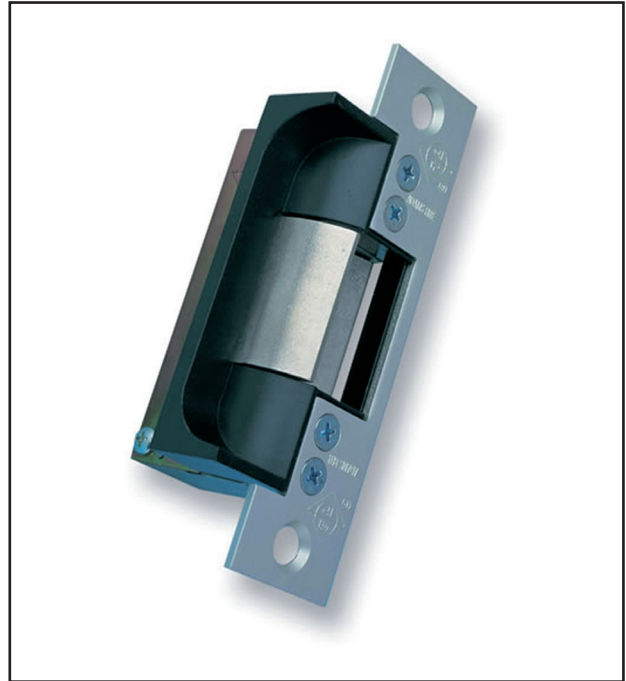


7170

Electric Strike for Single or Double Leaf Timber or Steel Doors



The Adams Rite 7100 Series is for remote use access control of any door equipped with Adams Rite 4700 series (or similar) deadlatch. The 7170 has a flat faceplate and will accommodate a 19mm latch throw.



Key Benefits

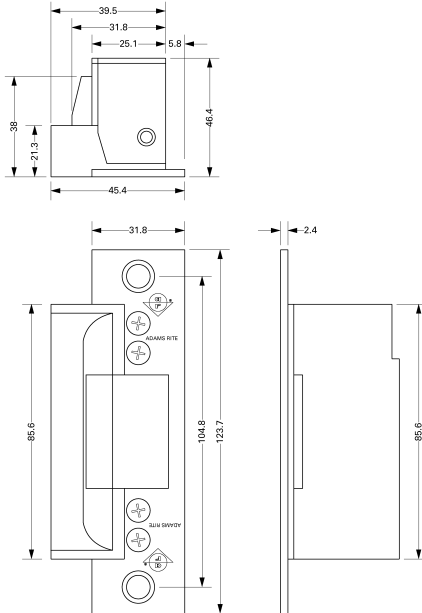
- Suitable for use on timber and steel doors
- Facility to change duty from fail-safe to fail secure and vice versa
- Electrical actuation unlocks the strike jaw, releasing the latchbolt so the door can be opened without operating the latch itself
- Will accommodate a latch throw of up to 19.05mm
- The 7170 has square corners to aid installation into timber and steel doors
- 907kg holding force (2000lbs)
- Non-handed

Related Hardware

RiteKey Keypad ~ Push-to-Exit Button ~ Power Supply Unit

Note: For out of hours security specify the Sentinel 6 Deadlock in conjunction with the electric strike/latch combination.

Dimensions



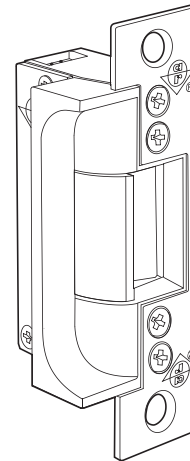
Specifications

Current Draw:	12vAC=1.48A, 12vDC=0.332A 24vAC=0.74A, 24vDC=0.19A (nominal). DC intermittent and continuous units are silent, AC intermittent units "buzz" on operation.
Voltage Tolerance:	±10%.
Powered By:	Internal solenoid.
Monitoring:	(Optional) Single: Latch only, Double: Latch & solenoid.
Duty:	Fail-safe or fail-secure (convertible without additional parts). DC power supply required for fail-safe operation.
Jaw Strength:	907kg (2000lbs).
Case:	85.6mm x 31.8mm x 41.6mm. Zinc aluminium alloy.
Mechanism:	Stainless steel internal blocking mechanism.
Strike Opening:	36.5mm x 19.1mm x 19.1mm. Stainless steel bolt retainer jaw.
Door Gap:	Minimum 3mm (1/8"), operational door gap 3-5mm.
Faceplate:	Aluminium. 123.7mm x 31.8mm (7170); 260.3mm x 36.3mm (7171); 201.6mm x 36.3mm (7172); 201.6mm x 31.8mm (7173). Flat.
Finishes:	See ordering codes.
Subcover:	Basic subcover lip will suit a 44.45mm (1 3/4") thick door. For extended bolt-on subcovers see ordering codes.
Standards:	ANSI/BHMA 156.5 Grade 1. UL Listed for burglary resistance.

Ordering Codes Matrix

7170 - 3 1 0 - 628 - 1

Model Number	
7170 Flat	_____
7171 10" Faceplate	_____
7172 8" Faceplate	_____
7173 8" Narrow Faceplate	_____
Voltage	
3 12 volt	_____
5 24 volt	_____
Current and Duty	
1 DC Continuous or intermittent	_____
4 AC Intermittent (fail-secure only)	_____
Features	
0 Standard/Fail-Secure	_____
5 Standard/Fail-Safe	_____
7 Monitored/Fail-Safe	_____
9 Monitored/Fail-Secure	_____
Finish	
628 Satin Aluminium (7170 only)	_____
313 Bronze (7170 only)	_____
335 Black (7170 only)	_____
652 Satin Chrome (7171/7172/7173)	_____
Options	
1 Single Monitoring (Latch only)	_____
2 Double Monitoring (Latch and Solenoid)	_____



Subcover Extension Codes (order separately)

Order Code	Dimension*	Order Code	Dimension*
91-0172-01	38.1mm (1.50")	91-0172-08	60.5mm (2.38")
91-0172-02	41.4mm (1.63")	91-0172-09	63.5mm (2.50")
91-0172-03	44.5mm (1.75")	91-0172-10	66.8mm (2.63")
91-0172-04	47.8mm (1.88")	91-0172-11	69.9mm (2.75")
91-0172-05	50.8mm (2.00")	91-0172-12	73.2mm (2.88")
91-0172-06	54.1mm (2.13")	91-0172-13	76.2mm (3.00")
91-0172-07	57.2mm (2.25")		

*Dimension from door centreline to jamb edge.