

# 1870

## Cylinder-Operated Flushbolt

The Adams Rite 1870 Cylinder-Operated Flushbolt is designed as an alternative to flip-lever operated flushbolts.



### Key Benefits

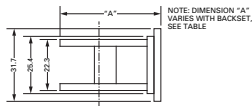
- Suitable for use on aluminium and steel doors.
- It offers building management key control of the inactive leaf of paired doors, thus preventing unauthorised operation.
- Recommended for installation at both top and bottom of an inactive door, with Adams Rite Maximum Security lockcase in the active door for greatest security.

### Related Hardware

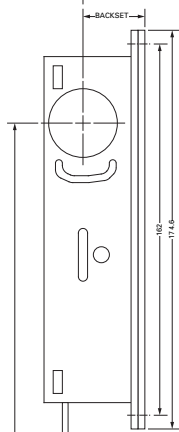
Round Cylinders ~ MS®4043 Cylinder Guard) ~ Round Thumbturns

**Note:** Cylinders, thumbturns and faceplates not supplied as standard; order separately.

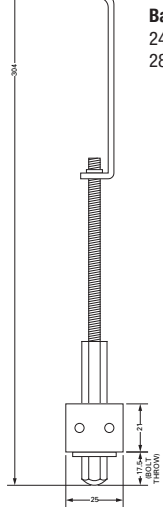
## Dimensions



NOTE: DIMENSION "A"  
VARIES WITH BACKSET.  
SEE TABLE

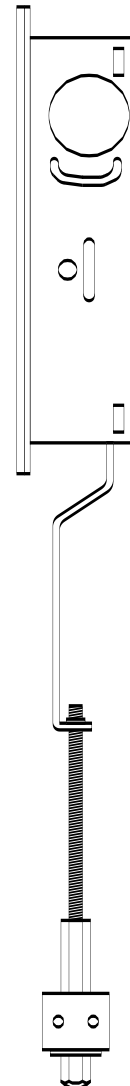


Backset	Dimension "A"
24.6mm (31/32")	41.4mm (1.63")
28.6mm (1 1/8")	45.2mm (1.78")



## Specifications

- Overall Case Size:** 174.6mm x 31.7mm x 41.4mm - 24.6mm Backset (31/32")  
174.6mm x 31.7mm x 45.2mm - 28.6mm Backset (1 1/8").
- Cylinder Height:** 304.8mm (12") (Cylinder centreline to retracted bolt tip).  
±31.75mm adjustment possible.
- Case:** Steel with corrosion-resistant plating.  
24.6mm, 28.6mm.
- Bolt:** 9.5mm (flat to flat). Hexagonal, hardened steel.  
Bolt Throw: 17.5mm.
- Operation:** 360° turn of key throws or retracts hardened hex-section bolt.  
Key only removable when bolt is in positively locked or unlocked position.
- Cylinder:** Any standard 29.4mm (1 5/32") Mortice Cylinder or Thumbturn with MS® cam.
- Strike:** 12.7mm diameter hole in metal threshold or header is suitable.  
**Forend:** Steel, with aluminium faceplate.



## Ordering Codes

### Lock Bodies

1870-200	24.6mm (31/32") Backset Cylinder Operated Flushbolt
1870-300	28.6mm (1 1/8") Backset Cylinder Operated Flushbolt

### Faceplates

24-1870-000-628	1870 Faceplate Flat SAA Finish
24-1870-100-628	1870 Faceplate Radius SAA Finish
24-1870-200-628	1870 Faceplate Left Hand Bevel SAA Finish
24-1870-300-628	1870 Faceplate Right Hand Bevel SAA Finish
24-1870-400-628	1870 Faceplate Radius Weatherstrip SAA Finish

**Note:** 628 denotes Satin Anodised Finish-substitute 628 with 313 for Bronze.