

Cylinders

Round Mortice Type

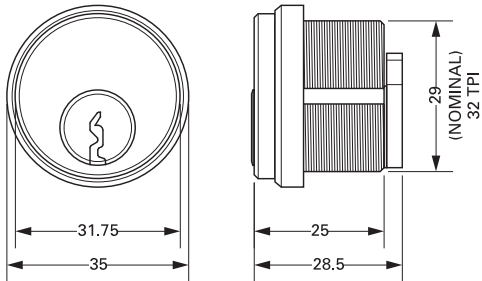
Adams Rite offers a range of cylinders to suit round screw in locks. Each system offers the flexibility to provide a solution for applications of most standard sizes including thumbturn variants.



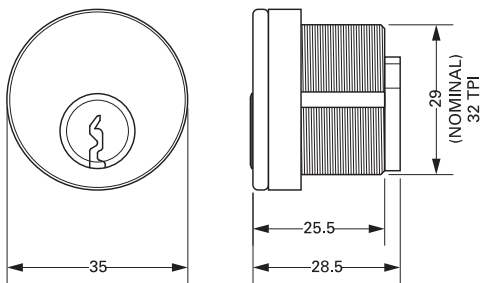
Key Benefits

- Suitable for use on aluminium, timber and steel doors.
- With MS® cam fitted.
- 3 keys supplied with each cylinder.
- Keyed alike in pairs and sets available.
- Supplied with 6mm trim ring as standard.
- Version with no keyway available.

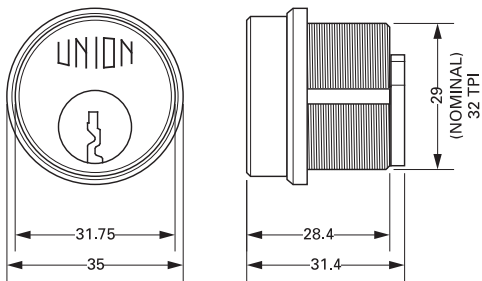
Dimensions



AREL (4056) Mortise Cylinder



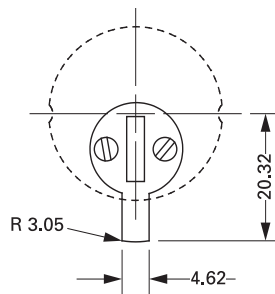
4036 Mortise Cylinder



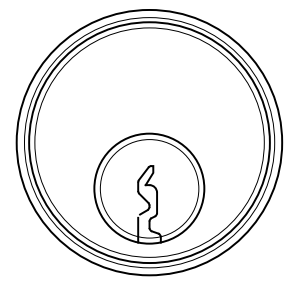
Union (4044) Mortise Cylinder

Specifications

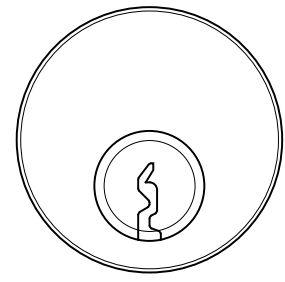
Overall Sizes:	35mm x 35mm x 28.5mm (AREL/4056) 35mm x 35mm x 28.5mm (4036) 35mm x 35mm x 31.4mm (Union/4044)
Diameter:	29mm, 32 TPI.
Material:	Brass.
Keys:	Nickel Silver, 2 supplied.
Keying:	Various; to differ, to pass or suited with other cylinders utilizing the same size keyway.



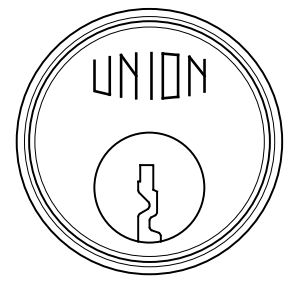
Note: All round mortise cylinder lockcases are operable by any standard 1 5/32" diameter mortise cylinder with special MS® cam dimensioned as shown here. Cam Tolerance: ±0.13mm.



AREL (4056)



4036



Union (4044)

Ordering Codes

4056-000	Key Blank to suit 4056 Cylinder
4056-3	3mm Trim Ring to suit 4056 Cylinder
4056-6	6mm Trim Ring to suit 4056 Cylinder
4056-61-00-626	AREL Mortise Cylinder Blank (c/w 6mm Trim Ring)
4056-61-01-626	AREL Mortise Cylinder KD Satin Chrome
4056-61-02-626	AREL Mortise Cylinder KA2 Satin Chrome
4056-61-626-xx	AREL Mortise Cylinder KA Satin Chrome
4036-001	Key Blank to suit 4036 Cylinder
4036-61-01-628	Mortise Cylinder KD SAA
4036-61-02-628	Mortise Cylinder KA2 SAA
4036-61-628-xx	Mortise Cylinder KA SAA
4044-000	Key Blank to suit Union 2x11 Cylinder
4044-41-01-626	Union Cylinder KD Satin Chrome
4044-41-02-626	Union Cylinder KA2 Satin Chrome

Note: The ordering code table lists the most popular variations; for additional models contact the Customer Service Department.