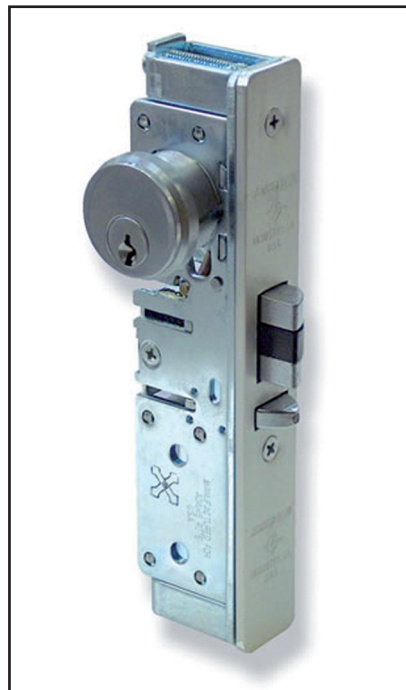


4710

Heavy Duty Deadlatch

The Adams Rite 4710 heavy duty Deadlatch offers flexible traffic control and a good level of security.

When used in emergency exit applications with a 4591 Paddle Handle, the assembly must use the 8461 ramped jaw strike in order to conform to BS EN 179+A1:2001



Key Benefits

- **The Auxiliary bolt feature deadlocks the latch when the door is closed against the strike.**
- **Operates using mortice cylinder, thumbturn (both with MS® cam) or range of Adams Rite furniture.**
- **It is often used in conjunction with 7100 series Electric Strikes to provide remote access control.**
- **Suitable for use on aluminium doors.**
- **The latch is interchangeable without stile modification with the MS® 1850S Deadlock.**
- **Latchbolt reversible and supplied non handed unless specified.**
- **Maximum operational door gap is 5mm.**
- **Independently tested to 1 million cycles.**

Related Hardware

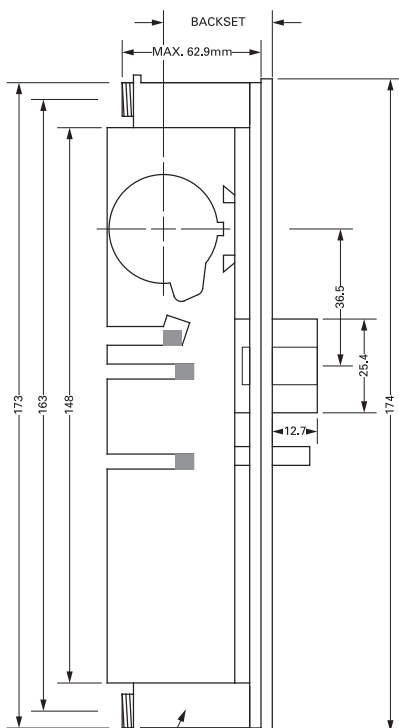
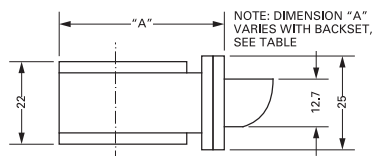
Round Cylinders ~ MS®4043 Cylinder Guard

Round Thumbturns ~ 4561 & 4565 Lever Handle & Thumbturn ~ 4568 Lever Handle

4591 Paddle Handle ~ 8461 Ramp Jaw Strikes ~ 7100 Series Electric Strikes

Dimensions

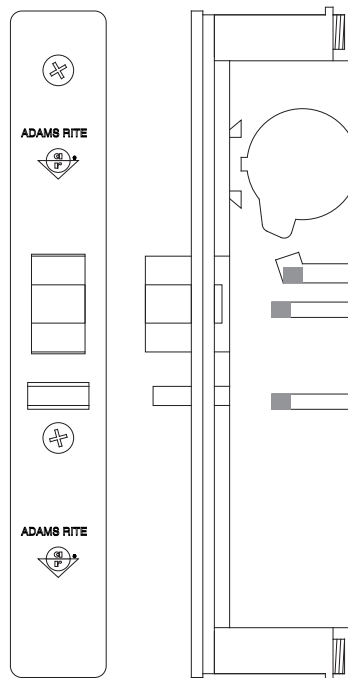
Backset	Dimension "A"
22.2mm (7/8")	38.3mm (1.51")
24.6mm (31/32")	40.6mm (1.60")
28.6mm (1 1/8")	44.7mm (1.76")
38.1mm (1 1/2")	54.4mm (2.14")



NOTE: TOP AND BOTTOM ADJUSTABLE FIXING SUPPORTS ARE REMOVABLE FOR USE WITH MOUNTING BRIDGES.

Specifications

Overall Case Size:	173mm x 25mm x 38.3mm - 22.2mm Backset (7/8") 173mm x 25mm x 40.6mm - 24.6mm Backset (31/32") 173mm x 25mm x 44.7mm - 28.6mm Backset (1 1/8") 173mm x 25mm x 54.4mm - 38.1mm Backset (1 1/2")
Case:	Steel with corrosion-resistant plating.
Backset:	22.2mm, 24.6mm, 28.6mm, 38.1mm.
Latch Bolt:	25.4mm x 12.7mm. ZA-27 Zinc, Chrome Plated, Hardened Steel Internal Pins, plus Anti-Pick baffle.
Latch Throw:	12.7mm.
Cylinder:	Any standard 29.4mm (1 5/32") Mortice Cylinder or Thumbturn with MS® cam.
Operation:	Turn key/thumbturn or handle to retract latch bolt.
Door Gap:	Maximum 5mm.
Forend:	Steel, with aluminium faceplate.



Ordering Codes

Lock Bodies

4710-100-5	Deadlatch 22.2mm (7/8") Backset LH
4710-100-6	Deadlatch 22.2mm (7/8") Backset RH
4710-200-5	Deadlatch 24.6mm (31/32") Backset LH
4710-200-6	Deadlatch 24.6mm (31/32") Backset RH
4710-300-5	Deadlatch 28.6mm (1 1/8") Backset LH
4710-300-6	Deadlatch 28.6mm (1 1/8") Backset RH
4710-400-5	Deadlatch 38.1mm (1 1/2") Backset LH
4710-400-6	Deadlatch 38.1mm (1 1/2") Backset RH

Faceplates

24-4700-000-628	4700 Series Faceplate Flat SAA Finish
24-4700-100-628	4700 Series Faceplate Radius SAA Finish
24-4700-200-628	4700 Series Faceplate Left Hand Bevel SAA Finish
24-4700-300-628	4700 Series Faceplate Right Hand Bevel SAA Finish
24-4700-400-628	4700 Series Faceplate Radius Weatherstrip SAA Finish

Note: Cylinders, thumbturns and faceplates not supplied as standard; order separately.

Note: 628 denotes standard Satin Anodised Finish, substitute 628 with 313 for Bronze, or 335 for Black.