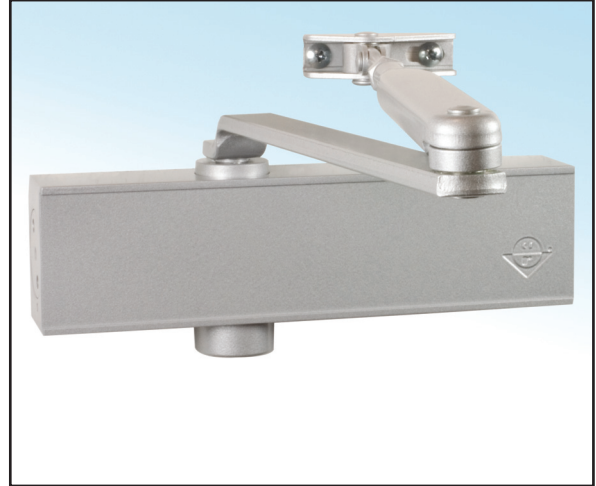


ARC-55 KN

Surface Mounted Door Closer



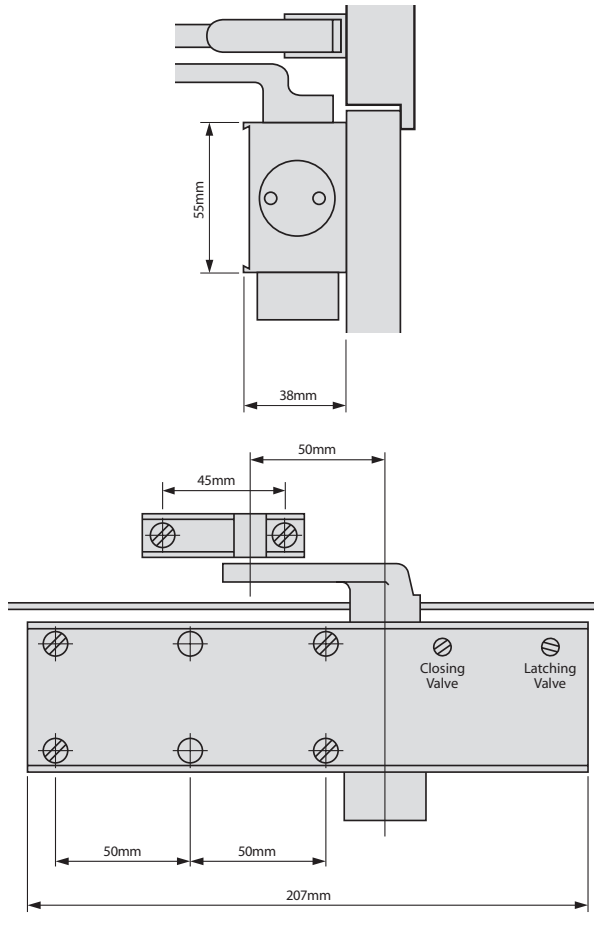
The Adams Rite ARC-55 KN surface mounted door closer is designed to provide a controlled closing of single action doors. Each closer has an extruded anodised aluminium body and a steel rack and pinion mechanism.



Key Benefits

- Suitable for use on aluminium, timber and steel doors
- CE marked
- Dual closing speeds allow flexibility in the door closing action
- Parallel arm bracket is included with the door closing fixing kit as standard
- The Regular arms are equipped with a power adjustment bracket which enables the power of the closer to be increased or decreased by 10%
- The closer is reversible for both clockwise and anti-clockwise situations and a comprehensive fixing pack, template and fitting instructions are included with each closer

Dimensions



Specifications

- CE Marked:** Classification code 383113.
Successfully tested to BS EN 1154: 1996+A1: 2002.
- Spring Strength:** EN 2+3 maximum door opening 180°. EN 4 maximum door opening 130°.
- Dimensions:** See opposite.
- Door Suitability:** See opposite for maximum door sizes/weights.
- Closing Speed:** Adjustable two speed control:
Valve No. 1 closing speed range 180° - 10°.
Valve No. 2 latching speed range 10° - 0°.
- Cycle Testing:** 500,000 cycles passed in accordance with the requirements of BS EN 1154: 1997.
- Amb. Working Temp:** -15°C to +40°C.
- Optional features:** Adjustable back-check facility (not to be used as a door stop). Hold open arm (should not to be fitted to fire doors). Drop plate.
- Fire Doors:** A minimum of spring strength No. 3 must be used on fire door applications.
- Reversible:** Clockwise and anti-clockwise applications.
- Finishes:** Standard finish is silver.
- Maintenance:** Check quarterly to ensure all fixings are secure and adjust, if necessary, the closing and latching speed so that the door operates both functionally and smoothly in accordance with the expectations of BS EN 1154: 1997. The door should be in good working condition.
- Note:** When using parallel arm installation it is recommended that the next highest spring strength is used. A door stop should always be fitted in order to prevent damage being caused to the door frame, adjacent wall finishes and furthermore to restrict the operating of the door closer past its maximum opening limitations.

Ordering Codes Matrix

551 7 - 1 01 4

Model Number

551 (KN)

Spring Strength

0 Accessory Only

7 Adjustable 2-4

Product

0 Accessory Only

1 Closer

Features and Accessories

01 Standard Application

03 With Adjustable Backcheck

04 With Hold-Open Arm

16 Drop Plate (Part Only)

Finishes

4 Silver

Example

To order a Drop Plate only, the ordering code would be **5510-0164**

Spring Strength	Maximum Door Width	Maximum Door Weight	Maximum Door Opening
EN2	850mm	40kg	180°
EN3	950mm	60kg	180°
EN4	1100mm	80kg	130°