

# 1870

## Cylinder-Operated Flushbolt

The Adams Rite 1870 Cylinder-Operated Flushbolt is designed as an alternative to flip-lever operated flushbolts.



### Key Benefits

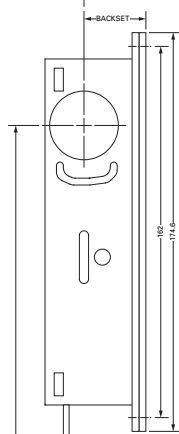
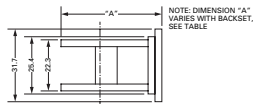
- Suitable for use on aluminium and steel doors.
- It offers building management key control of the inactive leaf of paired doors, thus preventing unauthorised operation.
- Recommended for installation at both top and bottom of an inactive door, with Adams Rite Maximum Security lockcase in the active door for greatest security.

### Related Hardware

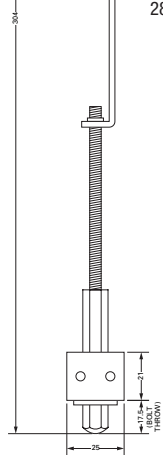
Round Cylinders ~ MS®4043 Cylinder Guard) ~ Round Thumbturns

**Note:** Cylinders, thumbturns and faceplates not supplied as standard; order separately.

## Dimensions

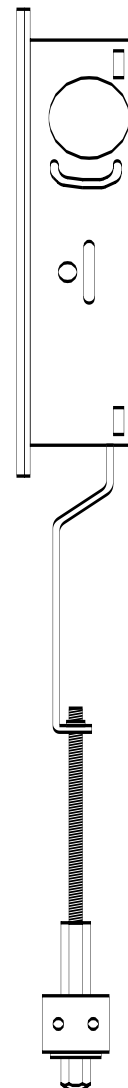


Backset	Dimension "A"
24.6mm (31/32")	41.4mm (1.63")
28.6mm (1 1/8")	45.2mm (1.78")



## Specifications

<b>Overall Case Size:</b>	174.6mm x 31.7mm x 41.4mm - 24.6mm Backset (31/32") 174.6mm x 31.7mm x 45.2mm - 28.6mm Backset (1 1/8").
<b>Cylinder Height:</b>	304.8mm (12") (Cylinder centreline to retracted bolt tip). ±31.75mm adjustment possible.
<b>Case:</b>	Steel with corrosion-resistant plating.
<b>Backset:</b>	24.6mm, 28.6mm.
<b>Bolt:</b>	9.5mm (flat to flat). Hexagonal, hardened steel. Bolt Throw: 17.5mm.
<b>Operation:</b>	360° turn of key throws or retracts hardened hex-section bolt. Key only removable when bolt is in positively locked or unlocked position.
<b>Cylinder:</b>	Any standard 29.4mm (1 5/32") Mortice Cylinder or Thumbturn with MS® cam.
<b>Strike:</b>	12.7mm diameter hole in metal threshold or header is suitable.
<b>Forend:</b>	Steel, with aluminium faceplate.



## Ordering Codes

### Lock Bodies

<b>1870-200</b>	<b>24.6mm (31/32") Backset Cylinder Operated Flushbolt</b>
<b>1870-300</b>	<b>28.6mm (1 1/8") Backset Cylinder Operated Flushbolt</b>

### Faceplates

<b>24-1870-000-628</b>	<b>1870 Faceplate Flat SAA Finish</b>
<b>24-1870-100-628</b>	<b>1870 Faceplate Radius SAA Finish</b>
<b>24-1870-200-628</b>	<b>1870 Faceplate Left Hand Bevel SAA Finish</b>
<b>24-1870-300-628</b>	<b>1870 Faceplate Right Hand Bevel SAA Finish</b>
<b>24-1870-400-628</b>	<b>1870 Faceplate Radius Weatherstrip SAA Finish</b>

**Note:** 628 denotes Satin Anodised Finish-substitute 628 with 313 for Bronze.