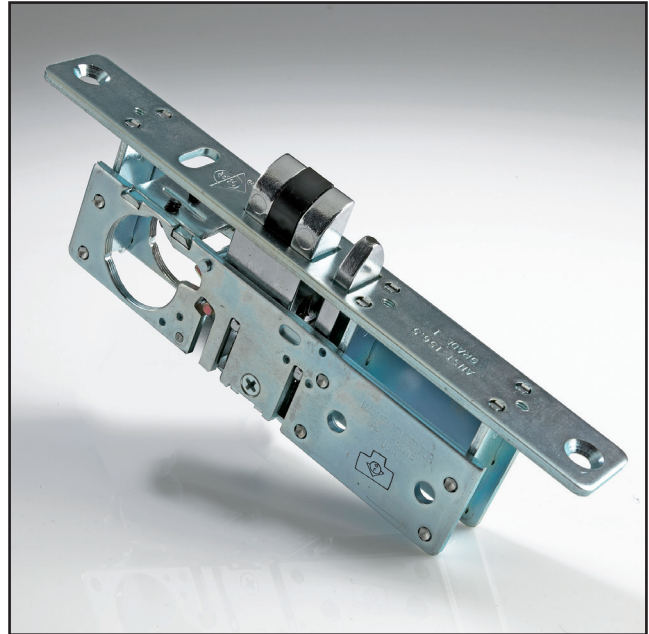


# 4720ANSI

## Deadlatch

The Adams Rite 4720ANSI is for use in hollow metal or wooden doors and offers flexible traffic control and a good level of security.

When used in emergency exit applications with a 4591 Paddle Handle, the assembly must use the 8360 ramped jaw strike in order to conform to BS EN 179+A1:2001



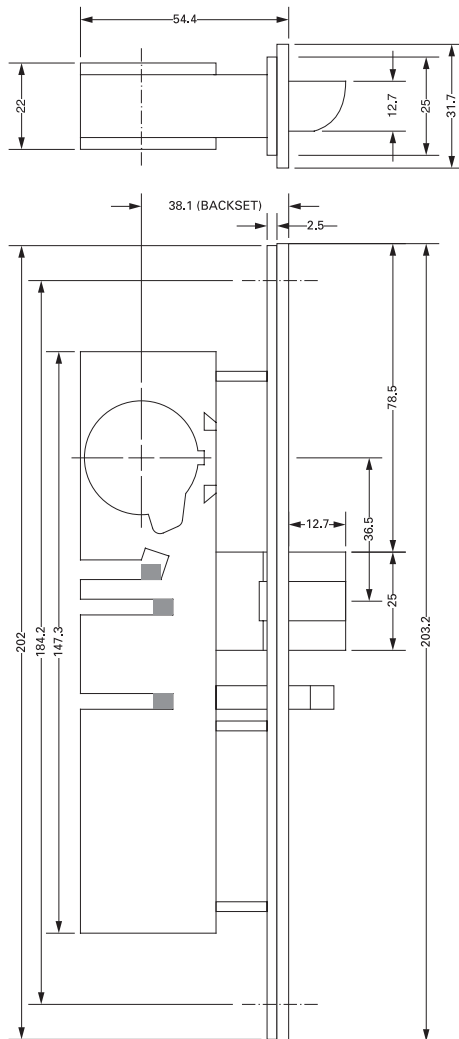
## Key Benefits

- Is interchangeable without stile modification with the MS® 1850SNSI Deadlock.
- It is often used in conjunction with the 7100 series Electric Strikes to provide remote access control.
- Accepts any standard mortice cylinder, thumbturn (both with MS® cam) or 4591 Paddle handle (with 4580 cam plug).
- Suitable for use on timber and steel doors.

## Related Hardware

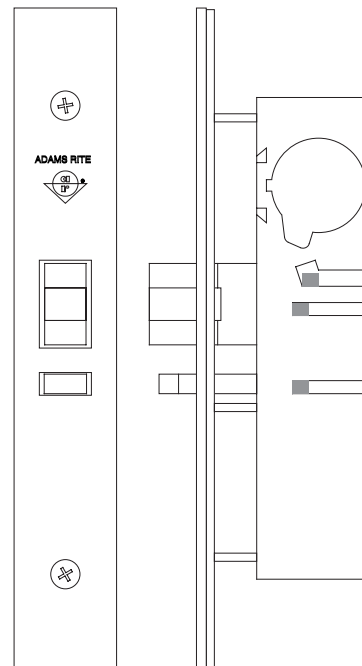
Round Cylinders ~ MS®4043 Cylinder Guard ~ Round Thumbturns  
4561 & 4565 Lever Handle & Thumbturn ~ 4568 Lever Handle ~ 4591 Paddle Handle  
8360 Ramp Jaw Strikes ~ 7100 Series Electric Strikes

## Dimensions



## Specifications

<b>Overall Case Size:</b>	202mm x 31.7mm x 54.4mm. Steel with corrosion-resistant plating.
<b>Backset:</b>	38.1mm (1 1/2").
<b>Latch Bolt:</b>	25.4mm x 12.7mm. ZA-27 Zinc, Chrome Plated, Hardened Steel Internal Pins, plus Anti-Pick baffle.
<b>Latch Throw:</b>	12.7mm.
<b>Auxiliary Bolt:</b>	ZA-27 Zinc, Chrome Plated with Hardened Steel Internal Pins.
<b>Cylinder:</b>	Any standard 29.4mm (1 5/32") Mortise Cylinder or Thumbturn with MS® cam.
<b>Operation:</b>	Turn key/thumbturn or handle to retract latch bolt.
<b>Door Gap:</b>	Maximum 5mm.
<b>Forend:</b>	Steel, with aluminium faceplate.



## Ordering Codes

### Lock Bodies

<b>4720-401</b>	4720ANSI Deadlatch for Timber & Metal Installation
<b>4720-45</b>	4720ANSI Deadlatch Bevel LH
<b>4720-46</b>	4720ANSI Deadlatch Bevel RH

### Faceplates

<b>24-4720-001-313</b>	4720ANSI Faceplate Flat Bronze Finish
<b>24-4720-001-335</b>	4720ANSI Faceplate Flat Black Finish
<b>24-4720-001-628</b>	4720ANSI Faceplate Flat SAA Finish
<b>24-4720-101-628</b>	4720ANSI Faceplate Radius SAA Finish

**Note:** Cylinders, thumbturns and faceplates not supplied as standard; order separately.

**Note:** 628 denotes Satin Anodised Finish substitute 628 with 313 for Bronze, or 335 for Black.