

Cylinders

Europrofile Type and Escutcheons

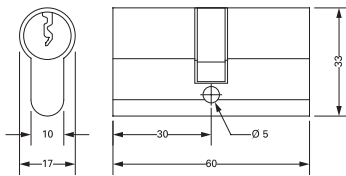
The Adams Rite Europrofile cylinders are designed to compliment the Adams Rite range of Euro Deadlatches and High Security Deadlocks.



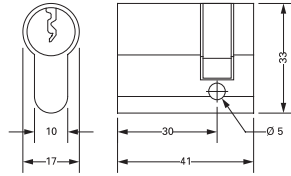
Key Benefits

- Suitable for use on aluminium, timber and steel doors.
- To prevent cylinders from being forced through the lockcase the cam sits at 30° off-centre thereby overlapping the side plate of the lockcase.
- Supplied with 3 keys as standard.
- Keyed alike in pairs and sets available.
- Range of escutheons to compliment

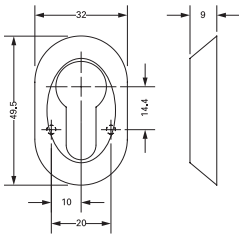
Dimensions



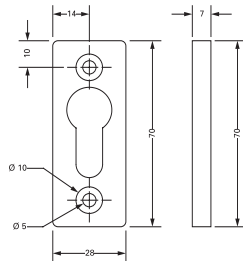
Sofi Europrofile Cylinder



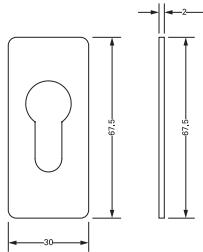
Sofi Half Europrofile Cylinder



60-33-17-630 Escutcheon



1755PZ Escutcheon



Self-Adhesive Escutcheon

Specifications

Europrofile Cylinders

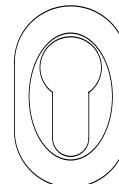
Overall Sizes: 33mm x 17mm x 60mm (Dual Profile)
33mm x 17mm x 41mm (Half Profile).
Diameter: 17mm.
Material: Brass (Nickel plated).
Keys: Nickel Silver, 3 supplied.
Keying: Various; to differ, to pass or suited with other cylinders utilizing the same size key blank. Master keyed available on special order.

Escutcheons

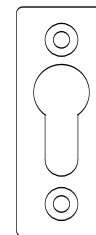
Size: 49.5mm x 32mm x 9mm (60-33-17-630)
70mm x 28mm x 7mm (1755PZ)
67.5mm x 30mm x 2mm (Self-Adhesive).



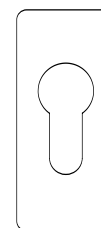
Sofi Europrofile Cylinder



60-33-17-630 Escutcheon



1755PZ Escutcheon



Self-Adhesive Escutcheon

Ordering Codes

61-00	Key Blanks
61-00-30-0-1	Half Profile Cylinder KD
61-00-30-0-1-2	Half Profile Cylinder KA2
61-00-30-0-1-xx	Half Profile Cylinder KA in sets
61-30-30-0-1	Cylinder KD
61-30-30-0-1-2	Cylinder KA2
61-30-30-0-1-xx	Cylinder KA in sets
60-33-17-630 D	Cylinder Escutcheon for 17mm Europrofile Cylinder
1755PZ Face Fix Esc	Face Fix Escutcheon Screw On F1 Finish SAA
601-000	Euro Profile Escutcheon Mill Finish
601-140	Euro Profile Self Adhesive Escutcheon White
601-335	Euro Profile Self Adhesive Escutcheon Black

Note: The order code table lists the most popular variations; for additional models and finishes contact the Adams Rite Customer Services Department.