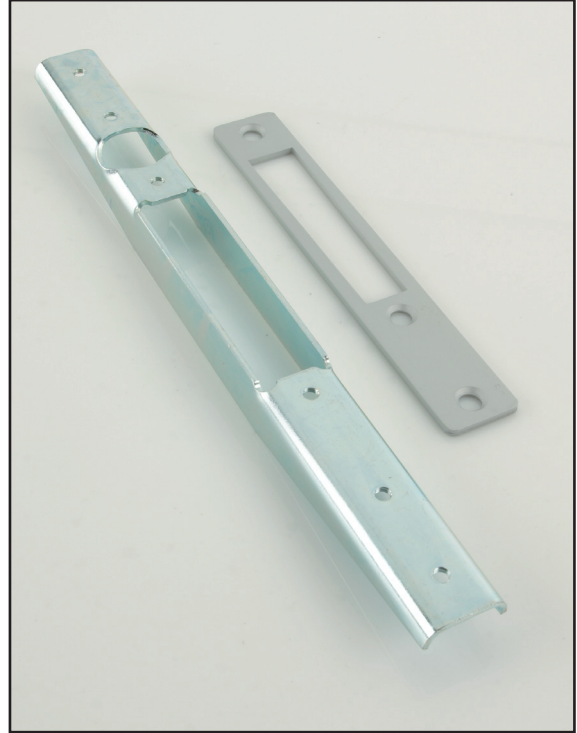


# MS<sup>®</sup>4000

## Armoured-Parts, Trim Strikes and Box Strikes

The Adams Rite MS<sup>®</sup> 4000 range are for the use with MS<sup>®</sup> 1850, MS<sup>®</sup> 2200 Deadlocks and MS<sup>®</sup> +1890 Latch/Deadlock.

Designed to increase the protection to the bolt when in the locked position.



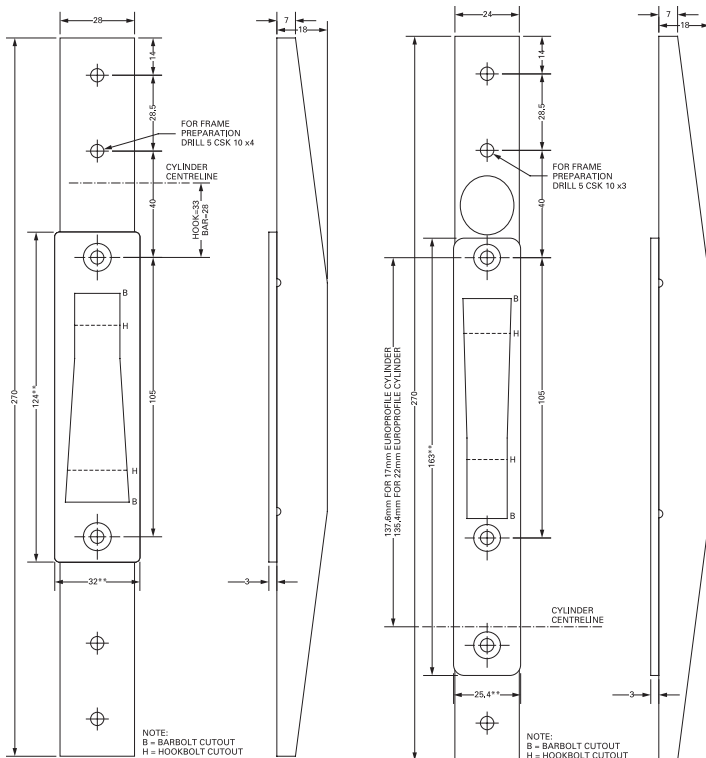
### Key Benefits

- Suitable for use on aluminium and steel doors.
- Enhances overall security.
- Available for hookbolt and barbolt lockcases.
- Prevent the forced method of entry known as 'jamb peeling'.
- Protects the 'soft' part of the door.
- Full range of trims and box strikes available dependent on model.

### Related Hardware

MS<sup>®</sup>1850S Maximum Security Deadlock ~ MS<sup>®</sup>1850SNSI Maximum Security Deadlock ~ MS<sup>®</sup>2200 Maximum Security Deadlock ~ MS<sup>®</sup>+1890 Latch/Deadlock

## Dimensions



4002 Armoured Part  
c/w 4000 Trim Strike

4052 Armoured Part  
c/w 4051 Trim Strike

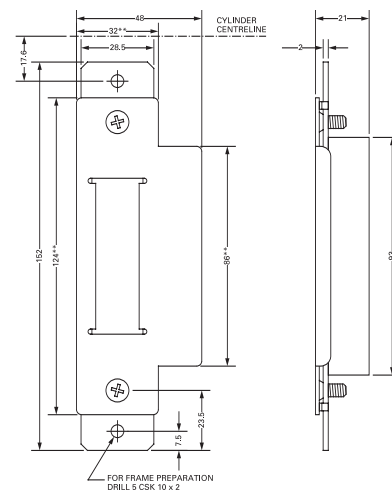
## Specifications

**Dimensions:**  
(including Trim Strike)

270mm x 32mm x 21mm (4002)  
270mm x 25.4mm x 21mm (4052)  
152mm x 48mm x 22mm (4505).

**Material:**  
**Trim Strike:**  
**Box Strike:**

Steel with corrosion-resistant plating.  
Aluminium, supplied.  
For use with MS®+1890.  
Strike stainless steel, box mild steel.



4505 Strike

Note: Add 0.5mm to all Trim Plate dimensions marked \*\* to give preparation sizes.

## Ordering Codes

4002-010	Armoured Part for use with MS®1850 Barbolt
4002-050	Armoured Part for use with MS®1850 Hookbolt
4000-011-628	Trim Strike SAA Flat for use with MS®1850SNSI Barbolt
4000-012-628	Trim Strike SAA Flat for use with MS®1850S Barbolt
4000-031-628	Trim Strike SAA Flat for use with MS®1850SNSI Hookbolt
4000-032-628	Trim Strike SAA Flat for use with MS®1850S Hookbolt
4000-111-628	Trim Strike SAA Radius for use with MS®1850SNSI Barbolt
4000-112-628	Trim Strike SAA Radius for use with MS®1850S Barbolt
4000-131-628	Trim Strike SAA Radius for use with MS®1850SNSI Hookbolt
4000-132-628	Trim Strike SAA Radius for use with MS®1850S Hookbolt
4052-010	Armoured Part for use with MS®2200 Barbolt
4052-050	Armoured Part for use with MS®2200 Hookbolt
4051-012-628	Trim Strike SAA Flat for use with MS®2200 Barbolt
4051-032-628	Trim Strike SAA Flat for use with MS®2200 Hookbolt
4051-112-628	Trim Strike SAA Radius for use with MS®2200 Barbolt
4051-132-628	Trim Strike SAA Radius for use with MS®2200 Hookbolt
4505-01-630	Box Strike Flat SS for use with MS®+1890 Latch/Deadlock
4505-02-630	Box Strike Radius SS for use with MS®+1890 Latch/Deadlock
4505-17-630	Box Strike Flat SS Extended 101.6mm (4.0") Jamb for use with MS®+1890 Latch/Deadlock
4505-21-630	Box Strike Flat SS Extended 114.3mm (4.5") Jamb for use with MS®+1890 Latch/Deadlock

Note: 628 denotes Satin Anodised and 630 Stainless Steel (SS) finish.

Trim Strikes are available in Bronze (313) and Black (335) finishes by special order.

