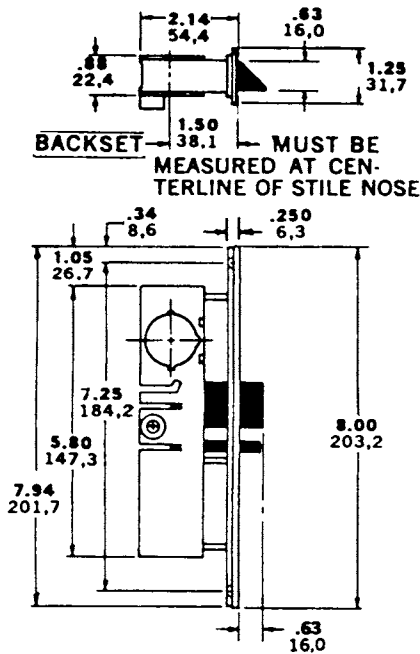


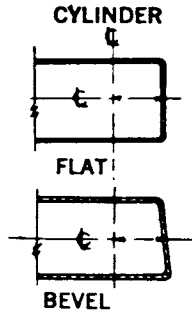
# 4720ANSI DEADLATCHES

## DIMENSIONS

INCHES  
MILLIMETERS

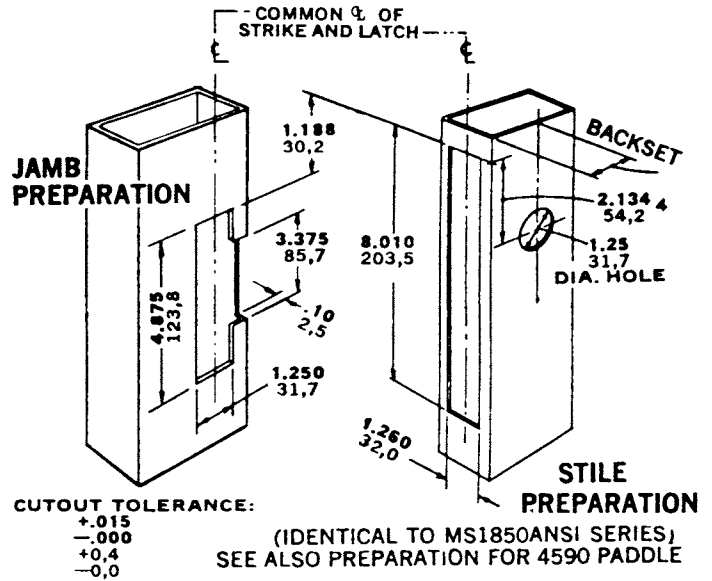


MUST BE MEASURED AT CENTERLINE OF STILE NOSE



LOCK SHOWN RIGHT HAND.

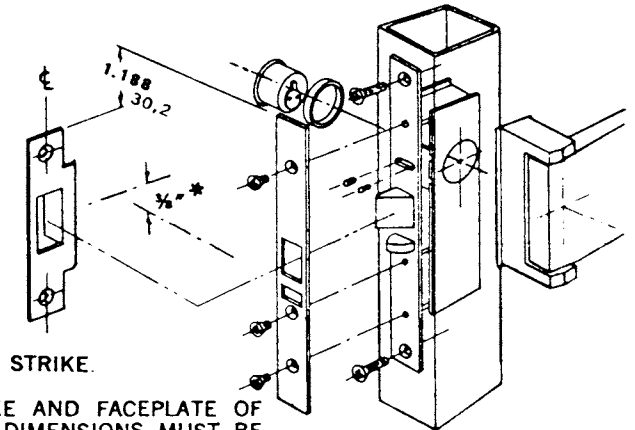
## INSTALLATION



CUTOUT TOLERANCE:

- +0.015
- 0.000
- +0.4
- 0.0

(IDENTICAL TO MS1850ANSI SERIES)  
SEE ALSO PREPARATION FOR 4590 PADDLE



\*STRIKE AND FACEPLATE OF ANSI DIMENSIONS MUST BE POSITIONED ACCORDING TO ANSI SPEC. (THE STRIKE'S CENTERLINE 3/8" ABOVE THE FACEPLATE'S.)

LATCH, PADDLE & CYLINDER INSTALLATION

See Page SW-100 for

## HOW TO ORDER

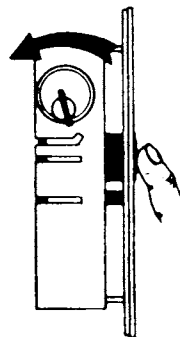
1. Specify QUANTITY.
2. Specify CATALOG NUMBER which identifies latch with specific nose shape. See below:

FLAT: 4720 ANSI	
RIGHT BEVEL: 4722 ANSI (RH)	
LEFT BEVEL: 4722 ANSI (LH)	

HO248-020

3. Specify HANDING: RH, LH, RHR or LHR.

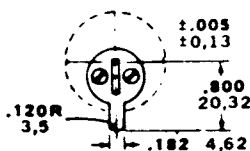
## BOLT HOLDBACK



A REVERSE TURN OF THE KEY (WHILE BOLT IS HELD FULLY RETRACTED) RETAINS THE BOLT, ALLOWING THE DOOR TO BE FREE SWINGING.

## CYLINDER CAM

CAM TOLERANCE:



4720 ANSI Series Latches are operable by any standard 1 1/32" diameter mortise cylinder with special M.S. cam dimensioned as shown. Cylinders for M.S. cams can be readily obtained from most cylinder mfrs.

See Page SW-98 for Cylinder Make & Trim Ring Information.

## RELATED HARDWARE & ACCESSORIES

1. Handles. Page SW-33 & SW-32A
2. Cylinders. Page SW-97.
3. Electric Strikes. Page SW-36i - 36J.