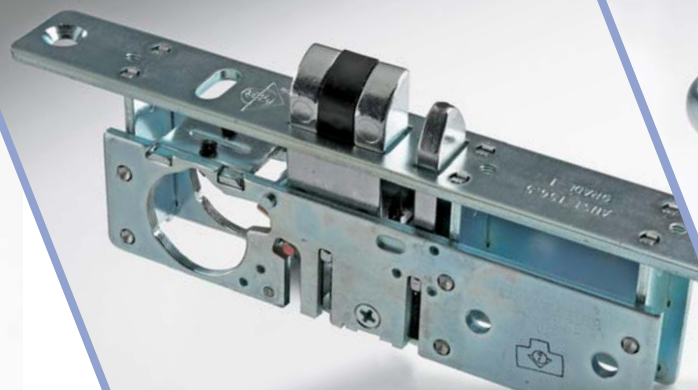
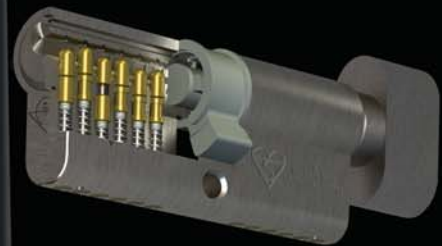
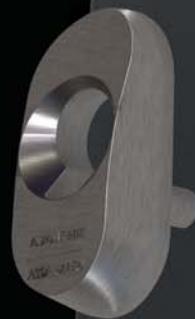


Trade Price List

UK Prices June 2009



ASSA ABLOY



How To Use The Price List	Page 3
Access Control	Pages 4 - 9
Door Hardware	Pages 10 - 12
Exit Hardware	Pages 13 - 14
Mechanical Locking	Pages 15 - 22
Pull Handles	Page 23
Pemko Products	Pages 24 - 25
Information	Page 26
Contact Details	Page 27

Please Note

This price list covers the most popular products, but for details of the complete range please contact the Customer Services Department.

Except where otherwise stated, all prices are for 628 natural anodised finish.

Details of other finishes and relevant prices are obtainable from the Customer Services Department.

All prices are in Pounds Sterling.

The majority of Adams Rite products are designed for use on 13/4" (44.45mm) thick doors, please contact the Customer Services Department (Tel: +44 (0)845 8734838) for applications with doors other than this dimension.

Delivery charges

Order value above £100.00 - F.O.C delivery

Order value less than £100.00 - £10.00 delivery charge applicable

Guaranteed next day delivery £16.00. Next day before 12 noon £21.00

Cancels all previous price lists. All prices are subject to VAT. Our terms and conditions are available on request.

Product name and description.

Prices, in Pounds Sterling.

MS®1850S Maximum Security Deadlock

Faceplate, cylinders, strike and installation fittings extra.

Lockcase:	22.2mm (7/8") or 38.1mm (1½") backset, hook or barbolt	35.48
	24.6mm (3/4") or 28.6mm (1 1/8") backset, hook or barbolt	25.01
	Monitoring for MS®1850S Series Deadlocks	add 46.05
Faceplates:	Flat, radius or bevelled (RH/LH)	3.22
	Radius with weatherstrip	4.19

Ordering codes and/or description, as used in the catalogue and on despatch notes.

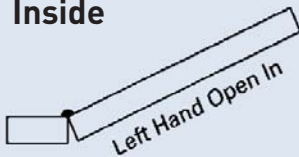
Handing of doors

The description of swinging door operation always viewed from the outside.

Left Hand: Door hinges on left.

Right Hand: Door hinges on right.

Inside



Inside



Outside



Outside

ACCESS CONTROL		
Ordering Code	Description	List Price (Ex. VAT)
7100 Series	Electric Strike for Single Leaf Aluminium Doors	
7100-310-313	12VDC FAIL SECURE ELECTRIC RELEASE	£134.52
7100-310-628	12VDC FAIL SECURE ELECTRIC RELEASE	£134.52
7100-315-335	12VDC FAIL SAFE ELECTRIC RELEASE	£134.52
7100-315-628	12VDC FAIL SAFE ELECTRIC RELEASE	£134.52
7100-315-999-99	7100 12VDC FAIL SAFE BODY ONLY C/W	£113.64
7100-317-628-1	12VDC FAIL SAFE SGLE MON	£230.74
7100-317-628-2	12VDC FAIL SAFE DBL MONITORED	£262.82
7100-319-628-1	12VDC FAIL SECURE SGLE MON	£230.74
7100-319-628-2	12VDC FAIL SECURE DBLE MON	£262.82
7100-340-628	12VAC FAIL SECURE ELECTRIC RELEASE	£134.52
7100-349-628-1	12VAC FAIL SECURE SGLE MON	£230.74
7100-510-628	24VDC FAIL SECURE ELECTRIC RELEASE	£134.52
7100-515-628	24VDC FAIL SAFE ELECTRIC RELEASE	£134.52
7100-517-628-1	24VDC FAIL SAFE SGLE MON	£230.74
7100-517-628-2	24VDC FAIL SAFE DBLE MON	£262.82
7100-519-628-1	24VDC FAIL SECURE SINGLE MON	£230.74
7100-540-628	24VAC FAIL SECURE ELECTRIC RELEASE	£134.52
7101 Series	Electric Strike for Double Leaf Aluminium Doors	
7101-310-628	12VDC FAIL SECURE ELECTRIC RELEASE	£153.38
7101-315-628	12VDC FAIL SAFE ELECTRIC RELEASE	£153.38
7101-317-628-1	12VDC FAIL SAFE SGLE MON	£249.62
7101-317-628-2	12VDC FAIL SAFE ELECTRIC STRIKE	£281.69
7101-319-628-1	12VDC FAIL SECURE SGLE MON	£249.62
7101-319-628-2	12VDC FAIL SECURE ELECTRIC STRIKE	£281.69
7101-340-628	12VAC FAIL SECURE ELECTRIC RELEASE	£153.38
7101-510-628	24VDC FAIL SECURE ELECTRIC RELEASE	£153.38
7101-515-628	24VDC FAIL SAFE ELECTRIC RELEASE	£153.38
7101-517-628-1	24VDC FAIL SAFE SGL MONITORED	£249.62
7101-519-628-1	24V DC FAIL SECURE RELEASE SNGL MON	£249.62
7101-540-628	24VSC FAIL SECURE ELECTRIC RELEASE	£153.38
7108 & 7128 Series	Electric Strikes	
7108-310-628	12V DC FAIL SECURE ELECTRIC RELEASE	£255.31
7108-315-628	12V DC FAIL SAFE ELECTRIC RELEASE	£255.31
7108-319-628-1	12VDC FAILSECURE SINGLE MONITORED	£351.54
7108-340-628	12V AC FAIL SECURE ELECTRIC RELEASE	£255.31
7108-510-628	24VDC FAIL SECURE SAA FINISH	£255.31
7108-515-628	24VDC FAIL SAFE ELECTRIC RELEASE	£255.31
7128-310-628	12VDC FAIL SECURE ELECTRIC RELEASE	£260.19
7128-315-628	12VDC FAIL SAFE ELECTRIC RELEASE	£260.19
7128-317-628-1	12VDC FAIL SAFE ELECTRIC RELEASE	£376.79
7128-319-628-1	12VDC FAIL SECURE ELECTRIC RELEASE	£376.79
7128-510-628	24VDC FAIL SECURE ELECTRIC RELEASE	£260.19
7128-515-628	24VDC FAIL SAFE ELECTRIC RELEASE	£260.19

ACCESS CONTROL		
Ordering Code	Description	List Price (Ex. VAT)
7110 Series Electric Strike for Single/DoubleLeaf Timber/Steel Doors		
7110-310-632	12VDC FAIL SECURE ELECTRIC RELEASE	£167.88
7110-310-652	12VDC FAIL SECURE ELECTRIC RELEASE	£167.88
7110-315-652	12VDC FAIL SAFE ELECTRIC RELEASE	£167.88
7110-315-999	ELECTRIC STRIKE LESS FACEPLATE	£122.92
7110-317-652-1	12VDC FAIL SAFE SGL MON	£264.12
7110-317-652-2	12VDC FAIL SAFE DBLE MON	£296.19
7110-319-652-1	12VDC FAIL SECURE SGL MON	£264.12
7110-319-652-2	12VDC FAIL SECURE DBLE MON	£296.19
7110-340-652	12VAC FAIL SECURE ELECTRIC RELEASE	£167.88
7110-510-652	24VDC FAIL SECURE ELECTRIC RELEASE	£167.88
7110-515-652	24VDC FAIL SAFE ELECTRIC RELEASE	£167.88
7110-517-652-2	24VDC FAIL SAFE DBLE MON	£296.19
7110-540-652	24V AC FAIL SECURE ELECTRIC RELEASE	£167.88
7111 Series Electric Strike for Single/Double Leaf Timber/Steel Doors		
7111-310-652	12VDC FAIL SECURE ELECTRIC RELEASE	£174.23
7111-315-652	12VDC FAIL SAFE ELECTRIC RELEASE	£174.23
7111-317-652-1	12VDC FAIL SAFE SGL MON	£265.71
7111-319-652-1	12VDC FAIL SECURE SGL MON	£265.71
7111-340-652	12VAC FAIL SECURE ELECTRIC RELEASE	£169.49
7111-510-652	24V DC FAIL SECURE ELECTRIC RELEASE	£169.49
7111-515-652	24VDC FAIL SAFE ELECTRIC RELEASE	£169.49
7113 Series Electric Strike for Single/Double Leaf Timber/Steel Doors		
7113-310-652	12V DC FAIL SECURE ELEC RELEASE	£153.29
7113-315-652	12V DC FAIL SAFE ELECTRIC RELEASE	£153.29
7113-317-652-1	12VDC FAIL SAFE SGL MON RELEASE	£249.52
7113-319-652-1	12VDC FAIL SECURE SGL MON RELEASE	£249.52
7113-319-652-2	12VDC FAIL SECURE DOUBLE MONITORED	£281.59
7113-340-652	12V AC FAIL SECURE ELECTRIC RELEASE	£153.29
7113-510-652	24VDC FAIL SECURE ELECTRIC STRIKE	£153.29
7113-515-652	24VDC FAIL SAFE ELECTRIC STRIKE	£153.29
7130 Series Electric Strike for MS1850 Replacement		
7130-310-628	12VDC FAIL SECURE ELECTRIC RELEASE	£151.05
7130-315-628	12VDC FAIL SAFE ELECTRIC RELEASE	£151.05
7130-317-628-1	12VDC FAIL SAFE MON ELEC RELEASE	£247.20
7130-319-628-1	12V DC FAIL SECURE SINGLE MONITORED	£247.29
7130-340-628	12VAC FAIL SECURE ELECTRIC RELEASE	£151.05
7130-515-628	24VDC FAIL SAFE ELECTRIC RELEASE	£151.05
7160 Series Electric Strike for Single Leaf Aluminium Doors		
7160-310-628	12VDC FAIL SECURE ELECTRIC RELEASE	£186.22
7160-315-628	12VDC FAIL SAFE ELECTRIC RELEASE	£186.22
7160-317-628-1	12VDC SINGLE MONITORED ELEC STRIKE	£282.44
7160-319-628-2	12V DC FAIL SECURE DBL MONITORED	£314.53
7160-340-628	12VAC FAIL SECURE ELECTRIC RELEASE	£186.22
7160-510-628	24VDC FAIL SECURE ELECTRIC RELEASE	£186.22
7160-515-628	24VDC FAIL SAFE ELECTRIC RELEASE	£186.22

ACCESS CONTROL		
Ordering Code	Description	List Price (Ex. VAT)
7140 Series Electric Strike for Single/Double Leaf Timber/Steel Doors		
7140-310-628	12VDC FAIL SECURE ELECTRIC RELEASE	£134.52
7140-315-628	12VDC FAIL SAFE ELECTRIC RELEASE	£134.52
7140-317-628-1	12VDC FAIL SAFE SGL MON	£230.74
7140-319-628-1	12VDC FAIL SECURE SGL MON	£230.74
7140-340-628	12VAC FAIL SECURE ELECTRIC RELEASE	£134.52
7140-510-628	24VDC FAIL SECURE ELECTRIC RELEASE	£134.52
7140-515-628	24VDC FAIL SAFE ELECTRIC RELEASE	£134.52
7140-517-628-1	24VDC FAIL SAFE SINGLE MONITORED	£230.74
7170 Series Electric Strike for Single/Double Leaf Timber/Steel Doors		
7170-310-628	12VDC FAIL SECURE ELECTRIC RELEASE	£186.22
7170-315-628	12VDC FAIL SAFE ELECTRIC RELEASE	£186.22
7170-317-628-1	12VDC SINGLE MONITORED ELEC STRIKE	£282.44
7170-340-628	12VAC FAIL SECURE ELECTRIC RELEASE	£186.22
7170-517-628-1	24VDC SINGLE MONITORED ELEC STRIKE	£282.44
7170-517-628-2	24VDC ELECTRIC STRIKE DBL MON SAA	£314.53
7170-519-628-1	24VDC FAIL SECURE SINGLE MON	£282.44
7171 Series Electric Strike for Single/Double Leaf Timber/Steel Doors		
7171-310-652	12VDC FAIL SECURE ELECTRIC RELEASE	£239.19
7171-315-652	12VDC FAIL SAFE ELECTRIC RELEASE	£239.19
7171-319-652-1	12V DC FAIL SECURE SINGLE MONITORED	£335.82
7171-340-652	12VAC FAIL SECURE ELECTRIC RELEASE	£229.58
7171-515-652	24VDC FAIL SAFE ELECTRIC RELEASE	£229.58
7172 Series Electric Strike for Single/Double Leaf Timber/Steel Doors		
7172-310-652	12VDC FAIL SECURE ELECTRIC RELEASE	£229.58
7172-315-652	12VDC FAIL SAFE ELECTRIC RELEASE	£229.58
7172-340-652	12VAC FAIL SECURE ELECTRIC RELEASE	£229.58
7172-515-652	24VDC FAIL SAFE ELECTRIC RELEASE	£229.58
7181 Series Electric Strike with Steel Wraparound Faceplate (Timber)		
7181-310-646	12VDC FAIL SECURE 12.7MM LATCH	£242.18
7181-315-646	12VDC FAIL SAFE 12.7MM LATCH TIMBER	£242.18
7100 Series Extended Subcovers		
91-0171-01	01 SUBCOVER EXTENSION 7100 & 7140	£40.13
91-0171-02	02 SUBCOVER EXTENSION 7100 & 7140	£40.13
91-0171-03	03 SUBCOVER EXTENSION 7100 & 7140	£40.13
91-0171-04	04 SUBCOVER EXTENSION 7100 & 7140	£40.13
91-0171-05	05 SUBCOVER EXTENSION 7100 & 7140	£40.13
91-0171-06	06 SUBCOVER EXTENSION 7100 & 7140	£40.13
91-0171-07	07 SUBCOVER EXTENSION 7100 & 7140	£40.13
91-0171-08	08 SUBCOVER EXTENSION 7100 & 7140	£40.13
91-0171-09	09 SUBCOVER EXTENSION 7100 & 7140	£40.13
91-0171-10	10 SUBCOVER EXTENSION 7100 & 7140	£40.13
91-0171-11	11" SUB-COVER EXTENSION FOR 7100	£40.13
91-0171-12	12" SUB-COVER EXTENSION FOR 7100	£40.13
91-0171-13	13 SUBCOVER EXTENSION 7100 & 7140	£40.13

ACCESS CONTROL		
Ordering Code	Description	List Price (Ex. VAT)
7100 Series	Extended Subcovers	
91-0172-05	05 SUBCOVER EXTENSION 7160 & 7170	£40.13
91-0172-06	06 SUBCOVER EXTENSION 7160 & 7170	£40.13
91-0172-07	07 SUBCOVER EXTENSION 7160 & 7171	£40.13
91-0172-08	08 SUBCOVER EXTENSION 7160 & 7171	£40.13
91-0173-04	04 SUBCOVER EXTENSION 7108 & 7128	£40.13
91-0173-05	05 SUBCOVER EXTENSION 7108 & 7128	£40.13
91-0173-06	06 SUBCOVER EXTENSION 7108 & 7128	£40.13
91-0173-07	07 SUBCOVER EXTENSION 7108 & 7128	£40.13
91-0173-08	08 SUBCOVER EXTENSION 7108 & 7128	£40.13
91-0173-09	09 SUBCOVER EXTENSION 7108 & 7128	£40.13
91-0173-12	12 SUB COVER EXTENSION 7108 & 7128	£40.13
91-0173-13	3" SUBCOVER EXTENSION 7108 & 7128	£40.13
91-0174-05	05 SUBCOVER EXTENSION 7130	£34.11
91-0174-50	50 SUBCOVER EXTENSION FOR 7300	£34.11
7100 Series	Faceplates	
24-7100-000-628	7100 FLAT FACEPLATE ALUMINIUM	£11.60
24-7100-000-652	7111 FLAT FACEPLATE 10" SATIN CHRO.	£57.50
24-7100-002-628	FLAT FACE PLATE 7130 / 7131	£12.56
24-7100-003-632	FLAT FACEPLATE 7110 7" BRIGHT BRASS	£52.47
24-7100-003-652	FLAT FACEPLATE 7110 8" SATIN CHROME	£43.98
24-7100-004-652SP	SATIN CHROME ON STEEL FACEPLATE	£44.96
24-7100-100-628	7100 RADIUSSED FACEPLATE ALUMINIUM	£11.60
Armlock 1354	Mini Electro-Shearmagnet	
1354-0100	MORTICE MOUNTED MINI SHEARLOCK	£389.64
1354-0102	MORTICE MINI SHEAR MAGNET 12/24VDC	£474.25
1354-0201	SURFACE MOUNTED MINI SHEARLOCK	£474.25
Armlock 1354	Accessories	
1354-0306	GLASS DOOR FIXING BRACKET	£100.34
1354-0400	LOCTITE ADHESIVE TYPE 317 50ML	£70.82
1354-0500	LOCTITE ACTIVATOR TYPE 734 150ML	£28.37
1354-0600	FLUSH MOUNT CONTACT FOR USE WITH	£14.66
1354-50-00	1354 SHEARLOCK PCB	£105.62
1354-50-01	1354 SHEARLOCK PCB BOX ONLY	£13.80
1500 Series	MS Maglock Magnetic and Mechanical Lock	
1500-600	ARCHITECTURAL HOUSING FOR 1500 ADJ	£43.03
1500-630	12/24V DC MAGNETIC & MECHANICAL	£179.50
1500-700	ADJUSTABLE BRACKET FOR 1500 MAGLOCK	£43.44
1500-800	L & Z BRACKET KIT PLUS TRIM PLATE	£111.15
1500M630	12/24V DC MONITORED SURFACE MOUNTED	£189.80

ACCESS CONTROL		
Ordering Code	Description	List Price (Ex. VAT)
Armlock 261	Surface Mount Direct-Pull Magnets	
261-000	261 MINI MAGNET SGL NON MONITORED	£98.30
261-005	SURFACE MOUNTED MINI MAG MONITORED	£108.40
261-200	261 MINIMAGNET DOUBLE NON MONITORED	£109.50
261-205	261 MINIMAGNET DOUBLE MONITORED	£123.80
Armlock 261	Accessories	
261-015	FIXING PACKS FOR 261-000	£5.69
261-300	REPLACEMENT ARMATURE 260 SERIES	£16.13
261-400	FLUSH ARMATURE BOX CONCEALED FIX	£23.02
261-50-00	261 NON MONITORED PCB	£28.12
261-700	L BRACKET FOR 261 MAGNET	£16.10
261-701	ADJUSTABLE L BRACKET C/W COVER	£21.00
261-800	L & Z BRACKET FOR 261 MINIMAGNET	£30.80
261-801	L AND Z BRACKET C/W C/W COVER PLATE	£39.80
261-900	RIM ARMATURE HOUSING FOR 261 MINI	£19.60
Armlock 262	Mortice Mount Direct-Pull Magnets	
262-005	262 MINI MAGNET SGL MONITORED	£98.30
263-005-1-99	1M TRANSOM HOUSING TO SUIT 262	£147.25
263-005-2-99	2M TRANSOM HOUSING TO SUIT 262	£196.33
Armlock 281	Surface Mount Direct-Pull Magnets	
281-000	281 LARGE MAGNET NON MONITORED	£104.30
281-005	281 LARGE MAGNET SINGLE MONITORED	£114.40
281-200	281 LARGE MAGNET DOUBLENON - MON	£162.20
281-205	281 LARGEMAGNET DOUBLE MONITORED	£205.50
Armlock 281	Accessories	
281-015	FIXING PACKS FOR 281-000 & 281-005	£5.69
281-300	280 SERIES ARMATURE ONLY	£32.20
281-50-00	281 NON MONITORED PCB	£30.37
281-50-01	281 MONITORED PCB	£33.74
281-700	L BRACKET FOR 281 LARGE MAGNET	£21.20
281-701	ADJUSTABLE L BRACKET C/W COVER	£25.80
281-800	L & Z BRACKETS FOR 281 MAGNET	£35.20
281-801	L AND Z BRACKET C/W COVER PLATE	£52.30
281-900	RIM ARMATURE HOUSING FOR 281 MAG	£22.50
Armlock 291	External Magnet	
291-005	EXTERNAL GATELOCK MONITORED FACE	£130.00
291-800	Z BRACKET FOR GATELOCK	£37.49
1391 Series	Electric Solenoid Bolt	
1391-0300	ARMATURE AND SCREW PACK FOR 1391	£17.55
1391-1042	SOLENOID BOLT 12VDC FAIL SAFE C/W	£139.00
1391-2042	SOLENOID BOLT 24VDC FAIL SAFE C/W	£144.00
1391-3042	SURFACE MOUNTED SOLENOID BOX BOLT	£54.60

ACCESS CONTROL		
Ordering Code	Description	List Price (Ex. VAT)
Power Supply Unit and Battery		
12-01	STANDBY POWER SUPPLY 12V 1AMP	£67.49
12-03	STANDBY POWER SUPPLY 12V 3AMP	£147.16
1225	POWER SUPPLY UNIT 12/24V DC	£162.16
1270	BATTERY 12V RECHARGEABLE SEALED	£39.46
RiteKey Keypad		
30-02	KEY PAD WITH COMPLETE IP65 RATING	£193.88
Switching Accessory		
Push-to-Exit Button		
39-01	SS PUSH TO EXIT BUTTON WITH SS BACK	£29.80
Door Loop		
40-01	SURFACE DOOR LOOP 40CM ALUMINIUM	£13.87
999M		
CodeLock Mechanical Access Control for Aluminium Doors		
C0465L	NARROW STILE CODELOCK, C/W CAMS	£277.56
C0475L	NARROW STILE CODELOCK, C/W CAMS	£277.56
999M		
Active Dummy Bar Exit Device Switching Accessory		
999-02-1-999-628	DUMMY PUSH BAR SGLE MONITORING	£286.11
999-02-3-999-628	DUMMY PUSH BAR SGLE MONITORING	£286.11
999-02-4-999-628	DUMMY PUSH BAR SGLE MONITORING	£286.11
999-03-3-999-628	DUMMY PUSH BAR DBLE MONITORING	£323.41

DOOR HARDWARE		
Ordering Code	Description	List Price (Ex. VAT)
ARC-51N	Overhead Concealed Door Closer	
5112-1010N	LIGHT SPRING CLOSER NO HOLD OPEN	£110.00
5112-1990N	LIGHT SPRING NHO C/W SIDE LOAD	£110.00
5112-1992N	LIGHT NHO 65MM BRACKET + SIDE LOAD	£110.00
5112-1995N	ARC51 LIGHT N/HO WITH END LOAD ANTI	£110.00
5112-1997N	ARC51 LIGHT NHO 70MM END LOAD ANTI	£110.00
5112-2010N	LIGHT SPRING CLOSER 90d HOLD OPEN	£110.00
5112-2990N	LIGHT SPRING CLOSER C/W SIDE	£110.00
5112-2992N	LIGHT 90d HO + 65MM BRACKET + SIDE	£110.00
5112-2995N	ARC51 LIGHT H/O WITH END LOAD ANTI	£110.00
5112-2997N	ARC51 LIGHT HO CW 70MM BRACKET FOR	£110.00
5113-1010N	MED SPRING CLOSURE NO HOLD OPEN	£110.00
5113-1990N	MEDIUM SPRING NHO WITH SIDE LOAD	£110.00
5113-1992N	MED NHO 65MM BRACKET + SIDE LOAD	£110.00
5113-1995N	ARC51 MEDIUM NHO WITH END LOAD ANTI	£110.00
5113-1997N	ARC51 MED NHO CW 70MM END LOAD ANTI	£110.00
5113-2010N	MEDIUM SPRING CLOSER 90dHOLD OPEN	£110.00
5113-2990N	MEDIUM SPRING 90d H/OPEN WITH SIDE	£110.00
5113-2992N	MED 90d HO + 65MM BRACKET + SIDE	£110.00
5113-2995N	ARC51 MEDIUM HO WITH END LOAD ANTI	£110.00
5113-2997N	ARC51 MED.HO C/W 70MM END LOAD ANTI	£110.00
5114-1010N	HEAVY SPRING CLOSURE NO HOLD OPEN	£110.00
5114-1990N	HEAVY SPRING 90d NHO C/W SIDE LOAD	£110.00
5114-1992N	HEAVY NHO 65MM BRACKET + SIDE LOAD	£110.00
5114-1995N	ARC51 HEAVY DUTY NHO WITH E/L ANTI	£110.00
5114-1997N	ARC51 HEAVY NHO 70MM END LOAD ANTI	£110.00
5114-2010N	HEAVY SPRING CLOSURE 90d HOLD	£110.00
5114-2990N	HEAVY SPRING 90 HOLD OPEN C/W ANTI	£110.00
5114-2995N	ARC51 HEAVY DUTY H/O WITH E/L ANTI	£110.00
5114-2997N	ARC51 HVY.HO C/W 70MM END LOAD ANTI	£110.00
5123-1010N	MEDIUM SPRING NHO C/W 22MM SPINDLE	£110.00
5123-1995N	ARC51 MEDIUM NHO 22MM WITH E/LOAD	£110.00
5123-1997N	ARC51 LIGHT NHO 18+4 WITH E/LOAD	£110.00
5123-2010N	MEDIUM SPR 90d H/O C/W 22MM SPINDLE	£110.00
5123-2995N	ARC51 MEDIUM HO 22MM WITH E/LOAD	£110.00
5142-1010N	ARC51 LIGHT NO H/OPEN 18+4 SPINDLE	£110.00
5142-1995N	ARC51 LIGHT NHO 18+4 WITH E/LOAD	£110.00
5142-1997N	ARC51 LIGHT NHO 18+4 WITH E/LOAD	£110.00
5142-2992N	ARC51 MEDIUM HO 18+4 WITH S/LOAD	£110.00
5142-2995N	ARC51 LIGHT HO 18+4 WITH E/LOAD	£110.00
5142-2997N	ARC51 LIGHT H/O 18+4 WITH E/LOAD	£110.00

DOOR HARDWARE		
Ordering Code	Description	List Price (Ex. VAT)
ARC-51N	Overhead Concealed Door Closer	
5143-1010N	ARC51 MEDIUM NO H/OPEN 18+4 SPINDLE	£110.00
5143-1990N	ARC51 MEDIUM NHO 18+4 SIDE LOAD	£110.00
5143-1992N	ARC51 MEDIUM NHO 18+4 SIDE LOAD	£110.00
5143-1995N	ARC51 MEDIUM NHO 18+4 WITH E/LOAD	£110.00
5143-1997N	ARC51 MEDIUM NHO 18+4 WITH E/LOAD	£110.00
5143-2010N	ARC51 MEDIUM HOLD OPEN 18+4 SPINDLE	£110.00
5143-2990N	ARC51 MEDIUM HO 18+4 WITH S/LOAD	£110.00
5143-2992N	ARC51 MEDIUM HO 18+4 WITH S/LOAD	£110.00
5143-2995N	ARC51 MEDIUM HO 18+4 WITH E/LOAD	£110.00
5143-2997N	ARC51 MEDIUM HO 18+4 WITH E/LOAD	£110.00
5144-1010N	ARC51 HEAVY NO H/OPEN 18+4 SPINDLE	£110.00
5144-1995N	ARC51 HEAVY NHO 18+4 WITH E/LOAD	£110.00
5144-1997N	ARC51 HEAVY NHO 18+4 WITH E/LOAD	£110.00
5144-2010N	ARC51 HEAVY HOLD OPEN 18+4 SPINDLE	£110.00
5144-2992N	ARC51 HEAVY HO 18+4 WITH S/LOAD	£110.00
5144-2995N	ARC51 HEAVY HO 18+4 WITH E/LOAD	£110.00
5144-2997N	ARC51 HEAVY HO 70MM END LOAD ANTI	£110.00
5149-0010N	ARC51N LESS SPRING SIDE LOAD AFT+	£110.00
5149-0097N	ARC51N LESS SPRING END LOAD AFT+	£110.00
ARC-51N	Springless Transom Pivot	
5119-0010N	SPRINGLESS SIDELOAD 70MM	£110.00
5119-0090N	SPRINGLESS SIDE LOAD AFT 65MM	£110.00
5119-0092N	SPRINGLESS SIDE LOAD AFT 70MM	£110.00
5119-0095N	SPRINGLESS END LOAD AFT 65MM	£110.00
5119-0097N	SPRINGLESS END LOAD AFT 70MM	£110.00
ARC-51N	Components	
5100-0111	NAME PLATE ADAMS RITE DOOR CONTROLS	£1.30
5100-0130	70MM CLOSER FIXING BRACKETS	£13.23
5110-0150	SIDE LOAD ANTI FINGER TRAP ARM & FIXING CHANNEL	£21.05
5110-0160	END LOAD ANTI FINGER TRAP ARM & FIXING CHANNEL	£25.64
5110-0170	ANTI FINGER TRAP ARC51 BRACKET 65MM	£7.24
5110-0210	ARC 51 HEAVY DUTY BOTTOM PIVOT	£11.96
5110-0211	FULLY THREADED BOTTOM PIVOT BOLT	£3.60
5100-0100	SIDE LOAD TOP ARM & FIXING CHANNEL	£17.96
ARC-55 KN	Surface Mounted Door Closer	
5517-1014	KN S/ CLOSER EN 2-4 SILVER	£46.79
5517-1034	KN S/CLOSER EN2-4 ADJ.BACKCHECK	£53.61
5517-1044	KN S/CLOSER EN2-4 C/W HOLD OPEN ARM	£55.43

DOOR HARDWARE		
Ordering Code	Description	List Price (Ex. VAT)
ARC-55 KV Surface Mounted Door Closer		
5550-0164	KV RANGE 2-5 DROP PLATE SILVER	£5.13
5558-0154	KV RANGE HOLD OPEN ARM SILVER	£16.28
5558-1014	KV S/CLOSER STR 2-5 STD ARM SILVER	£55.38
5558-1034	KV S/CLOSER STR2-5 SILVER C/W ADJ	£61.82
5558-1044	KV S/CLOSER STR 2-5 SILVER H/O ARM	£72.61
5559-1014	KV S/CLOSER STR 2-6 STD ARM SILVER	£84.18
5559-1034	KV S/CLOSER STR 2-6 ADJ BACK CHECK	£91.93
ARC-53 Floor Spring		
5333-1012	MEDIUM SPRING N/H OPEN	£128.28
5333-2012	MEDIUM SPRING 90D HOLD OPEN	£128.28
Markar Continuous Hinges		
FS-102-84"	FULL SURFACE ALUMINIUM CONTINUOUS	£198.28
FM-300-84"	FULL MORTICE STAINLESS STEEL HINGE 84"	£232.46
FM-300-96"	FULL MORTICE STAINLESS STEEL HINGE 96"	£385.26
FM-344-84"	FULL MORTICE STAINLESS STEEL HINGE 84"	£276.01
FM-344-96"	FULL MORTICE STAINLESS STEEL HINGE 96"	£295.08
FM-3500-84"	FULL MORTICE STAINLESS STEEL HOSPITAL TIP HINGE 84"	£311.90
FM-3500-96"	FULL MORTICE STAINLESS STEEL HOSPITAL TIP HINGE 96"	£397.47

EXIT HARDWARE		
Ordering Code	Description	List Price (Ex. VAT)
930 Series	Mortice Exit Device	
930-00-2-704-628	ANSI MORTICE EXIT DEVICE	£295.10
930-00-2-805-628	ANSI MORTICE EXIT DEVICE	£295.10
930-00-3-704-628	ANSI MORTICE EXIT DEVICE	£295.10
930-00-3-804-628	ANSI MORTICE EXIT DEVICE	£295.10
930-00-4-704-628	ANSI MORTICE EXIT DEVICE	£295.10
930-00-4-804-628	ANSI MORTICE EXIT DEVICE	£295.10
930-00-5-704-628	ANSI MORTICE EXIT DEVICE	£295.10
930-01-3-704-628	MORTICE EXIT DEVICE C/W CYL DOGGING	£295.10
940 Series	Mortice Exit Device	
940-00-1-702-628	MORTICE EXIT DEVICE FOR NARROW STYLE	£295.10
940-00-1-7U3-628	UNIVERSAL EXIT DEVICE 1 1/8" SAA	£295.10
940-00-1-7U4-628	UNIVERSAL EXIT DEVICE 1 1/2" SAA	£295.10
940-00-1-8U3-628	UNIVERSAL EXIT DEVICE 1 1/8" SAA	£295.10
940-00-1-8U4-628	UNIVERSAL EXIT DEVICE 1 1/2" SAA	£295.10
940-00-2-702-313	MORTICE EXIT DEVICE FOR NARROW STYLE	£295.10
940-00-2-702-628	MORTICE EXIT DEVICE FOR NARROW STYLE	£295.10
940-00-2-742-628	MORTICE EXIT DEVICE SAA FINISH	£295.10
940-00-2-7U3-628	UNIVERSAL EXIT DEVICE 1 1/8" SAA	£295.10
940-00-2-7U4-628	UNIVERSAL EXIT DEVICE 1 1/2" SAA	£295.10
940-00-2-802-628	MORTICE EXIT DEVICE FOR NARROW STYLE	£295.10
940-00-2-842-628	MORTICE EXIT DEVICE SAA FINISH	£295.10
940-00-2-8U3-628	UNIVERSAL EXIT DEVICE 1 1/8" SAA	£295.10
940-00-2-8U4-628	UNIVERSAL EXIT DEVICE 1 1/2" SAA	£295.10
940-00-3-702-335	MORTICE EXIT DEVICE FOR NARROW STYLE	£295.10
940-00-3-702-628	MORTICE EXIT DEVICE FOR NARROW STYLE	£295.10
940-00-3-712-628	MORTICE EXIT DEVICE FOR NARROW STYLE	£295.10
940-00-3-7U3-628	UNIVERSAL EXIT DEVICE 1 1/8" SAA	£295.10
940-00-3-7U4-628	UNIVERSAL EXIT DEVICE 1 1/2" SAA	£295.10
940-00-3-802-628	MORTICE EXIT DEVICE FOR NARROW STYLE	£295.10
940-00-3-8U3-628	UNIVERSAL EXIT DEVICE 1 1/8" SAA	£295.10
940-00-3-8U4-628	UNIVERSAL EXIT DEVICE 1 1/2" SAA	£295.10
940-00-4-702-628	MORTICE EXIT DEVICE FOR NARROW STYLE	£295.10
940-00-4-722-628	MORTICE EXIT DEVICE SAA FINISH	£295.10
940-00-4-742-628	MORTICE EXIT DEVICE SAA FINISH	£295.10
940-00-4-7U3-313	MORTICE EXIT DEVICE FOR NARROW STYLE	£295.10
940-00-4-7U3-628	UNIVERSAL EXIT DEVICE 1 1/8" SAA	£295.10
940-00-4-7U4-628	UNIVERSAL EXIT DEVICE 1 1/2" SAA	£295.10
940-00-4-802-628	MORTICE EXIT DEVICE FOR NARROW STYLE	£295.10
940-00-4-812-628	MORTICE EXIT DEVICE FOR NARROW STYLE	£295.10
940-00-4-822-628	MORTICE EXIT DEVICE SAA FINISH	£295.10
940-00-4-842-628	MORTICE EXIT DEVICE SAA FINISH	£295.10
940-00-4-8U3-628	UNIVERSAL EXIT DEVICE 1 1/8" SAA	£295.10
940-00-4-8U4-628	UNIVERSAL EXIT DEVICE 1 1/2" SAA	£295.10
940-00-5-702-628	MORTICE EXIT DEVICE FOR NARROW STYLE	£295.10
940-00-5-722-628	MORTICE EXIT DEVICE SAA FINISH	£295.10
940-00-5-742-628	MORTICE EXIT DEVICE SAA FINISH	£295.10
940-00-5-7U3-628	UNIVERSAL EXIT DEVICE 1 1/8" SAA	£295.10
940-00-5-7U4-628	UNIVERSAL EXIT DEVICE 1 1/2" SAA	£295.10
940-00-5-802-628	MORTICE EXIT DEVICE FOR NARROW STYLE	£295.10
940-00-5-842-628	MORTICE EXIT DEVICE SAA FINISH	£295.10
940-00-5-8U3-628	UNIVERSAL EXIT DEVICE 1 1/8" SAA	£295.10
940-00-5-8U4-628	UNIVERSAL EXIT DEVICE 1 1/2" SAA	£295.10
940-01-1-702-628	MORTICE EXIT DEVICE C/W CYL DOGGING	£381.04
940-01-2-8U3-628	MORTICE EXIT DEVICE C/W CYL DOGGING	£381.04
940-01-3-8U3-628	MORTICE EXIT DEVICE C/W CYL DOGGING	£381.04
940-01-4-8U3-628	MORTICE EXIT DEVICE C/W CYL DOGGING	£381.04

EXIT HARDWARE		
Ordering Code	Description	List Price (Ex. VAT)
960 Series	Concealed Vertical Rod Exit Device	
8655-01	8655-01 TALL DOOR KIT FOR	£41.29
960-00-1-999-628	CVR EXIT DEVICE SAA	£295.10
960-00-2-999-313	CVR EXIT DEVICE BRONZE	£342.10
960-00-2-999-335	CVR EXIT DEVICE BLACK	£342.10
960-00-2-999-628	CVR EXIT DEVICE SAA	£295.10
960-00-3-999-313	CVR EXIT DEVICE BRONZE	£342.10
960-00-3-999-335	CVR EXIT DEVICE BLACK	£342.10
960-00-3-999-628	CVR EXIT DEVICE SAA	£295.10
960-00-4-999-335	CVR EXIT DEVICE BLACK	£342.10
960-00-4-999-628	CVR EXIT DEVICE SAA	£295.10
960-00-5-999-335	CVR EXIT DEVICE BLACK	£342.10
960-00-5-999-628	CVR EXIT DEVICE SAA	£295.10
960-01-1-999-628	CVR EXIT DEVICE SAA CW 8070 DOGGING	£381.04
960-01-2-999-628	CVR EXIT DEVICE SAA CW 8070 DOGGING	£381.04
960-01-3-999-628	CVR EXIT DEVICE SAA CW 8070 DOGGING	£381.04
960-01-4-999-628	CVR EXIT DEVICE SAA CW 8070 DOGGING	£381.04
960-01-5-999-628	CVR EXIT DEVICE SAA CW 8070 DOGGING	£381.04
960-02-4-999-628	CVR EXIT DEVICE MONITORED	£363.95
M' Function	Options For Exit Devices	
31-0505-01	SGL MONITORED SWITCH KIT FOR 900	£90.85
31-0505-02	DBL MONITORED SWITCH KIT FOR 900	£126.27
900 Series	Spare Components	
20-0589	PUSH BAR TO OPEN STICKER	£4.95
25-0640	END CAP FOR 900 SERIES EXITS	£7.55
29-0481	BAR TYPE DOGGING KEY	£1.90
900 Series	Entry Trim and Accessories	
8066-00-07-130	ENTRY FUNCTION SAA	£133.32
8066-00-08-130	ENTRY FUNCTION SAA	£133.32
8650-130	CYLINDER ESCUTCHEON SILVER	£31.11
3080 Series	Entry Trim	
3081-3U-626	LEVER ENTRY FUNCTION UNIVERSAL FIT	£245.24
3082-3U-626	LEVER ENTRY FUNCTION UNIVERSAL FIT	£272.35
3082E-3U-30-626	ENTRY TRIM-ELECTRIFIED FAIL SECURE	£392.06
3082E-3U-35-626	ENTRY TRIM-ELECTRIFIED FAIL SAFE	£392.06
3083-3U-626	LEVER ENTRY FUNCTION UNIVERSAL FIT	£298.29
4781 Series	Two Point Latch	
4781-021-628	2 POINT LATCH PUSH TO LEFT SAA	£217.17
4781-021-628-947	2 POINT PUSH TO LEFT EXTEN PIN 47MM	£217.17
4781-021-628-952	2 POINT PUSH TO LEFT EXTEN PIN 52MM	£217.17
4781-021-628-99	2 POINT LATCH PUSH TO LEFT PADDLE ONLY SAA	£139.98
4781-041-335	2 POINT LATCH PUSH TO RIGHT BLACK	£220.09
4781-041-628	2 POINT LATCH PUSH TO RIGHT SAA	£217.17
4781-041-628-947	2 POINT PUSH TO RIGHT EXT PIN 47MM	£217.17
4781-041-628-952	2 POINT PUSH TO RIGHT EXTEN PIN 52MM	£217.17
4781-041-628-99	2 POINT LATCH PUSH TO RIGHT PADDLE ONLY SAA	£139.98

MECHANICAL LOCKING		
Ordering Code	Description	List Price (Ex. VAT)
1850 Maximum Security Deadlock	Lockcase	
1850-110	7/8 INCH B/SET BARBOLT DEADLOCK	£35.48
1850-150	7/8 INCH B/SET HOOKBOLT DEADLOCK	£35.48
1850-210	31/32 INCH B/SET BARBOLT DEADLOCK	£27.02
1850-210-02	31/32 INCH B/SET BARBOLT DEADLOCK MONITORED	£75.95
1850-250	31/32 INCH B/SET HOOKBOLT DEADLOCK	£27.02
1850-250-02	31/32 INCH B/SET HOOKBOLT DEADLOCK MONITORED	£75.95
1850-310	1 1/8 INCH B/SET BARBOLT DEADLOCK	£27.02
1850-310-02	1 1/8 INCH B/SET BARBOLT DEADLOCK MONITORED	£75.95
1850-350	1 1/8 INCH B/SET HOOKBOLT DEADLOCK	£27.02
1850-350-02	1 1/8 INCH B/SET HOOKBOLT DEADLOCK MONITORED	£75.95
1850-410	1 1/2 INCH B/SET BARBOLT DEADLOCK	£35.48
1850-411	1 1/2 INCH B/SET ANSI BARBOLT DEADLOCK	£41.74
1850-411-02	1 1/2 INCH B/SET ANSI BARBOLT DEADLOCK MONITORED	£90.67
1850-450	1 1/2 INCH B/SET HOOKBOLT DEADLOCK	£35.48
1850-450-02	1 1/2 INCH B/SET HOOKBOLT DEADLOCK MONITORED	£84.41
1850-451	1 1/2 INCH B/SET HOOKBOLT DEADLOCK	£43.21
1850 Maximum Security Deadlock	Faceplates	
24-1850-010-313	MS1850 FLAT FACEPLATE BARBOLT BRONZE	£4.56
24-1850-010-628	MS1850 FLAT FACEPLATE BARBOLT SAA	£3.22
24-1850-011-313	MS1850 ANSI FLAT FACEPLATE BARBOLT BRONZE	£7.08
24-1850-011-628	MS1850 ANSI FLAT FACEPLATE BARBOLT SAA	£5.41
24-1850-050-628	MS1850 FLAT FACEPLATE HOOKBOLT SAA	£3.22
24-1850-051-628	MS1850 ANSI FLAT FACEPLATE HOOKBOLT SAA	£3.22
24-1850-110-628	MS1850 RADIUS FACEPLATE BARBOLT SAA	£3.22
24-1850-150-628	MS1850 RADIUS FACEPLATE HOOKBOLT SAA	£3.22
24-1850-151-628	MS1850 RADIUS ANSI FACEPLATE HOOKBOLT SAA	£5.41
24-1850-250-628	MS1850 LH BEVEL FACEPLATE HOOKBOLT SAA	£3.22
24-1850-350-628	MS1850 RH BEVEL FACEPLATE HOOKBOLT SAA	£3.22
24-1850-410-628	MS1850 RADIUS WEATHERSTRIP FACEPLATE BARBOLT SAA	£4.19
24-1850-450-628	MS1850 RADIUS WEATHERSTRIP FACEPLATE HOOKBOLT SAA	£4.19
1890 Maximum Security Deadlock	Lockcase	
1890-250-5	31/32 INCH B/SET HOOKBOLT DEADLOCK/LH	£141.44
1890-250-6	31/32 INCH B/SET HOOKBOLT DEADLOCK/RH	£141.44
1890-350-5	1 1/8 INCH B/SET HOOKBOLT DEADLOCK/LH	£141.44
1890-350-6	1 1/8 INCH B/SET HOOKBOLT DEADLOCK/RH	£141.44
1890-450-5	1 1/2 INCH B/SET HOOKBOLT DEADLOCK/LH	£141.44
1890-450-6	1 1/2 INCH B/SET HOOKBOLT DEADLOCK/RH	£141.44
1890 Maximum Security Deadlock	Faceplates	
24-1890-050-313	MS1890 FLAT FACEPLATE BRONZE	£6.79
24-1890-050-628	MS1890 FLAT FACEPLATE SAA	£5.21
24-1890-150-628	MS1890 RADIUS FACEPLATE SAA	£5.21
24-1890-250-628	MS1890 LH BEVEL FACEPLATE SAA	£5.21
24-1890-350-628	MS1890 RH BEVEL FACEPLATE SAA	£5.21
24-1890-450-628	MS1890 RADIUS WEATHERSTRIP FACEPLATE SAA	£9.42

MECHANICAL LOCKING		
Ordering Code	Description	List Price (Ex. VAT)
2200 Maximum Security Deadlock		
Lockcase		
2200-110	25MM B/SET BARBOLT DEADLOCK	£14.77
2200-110-02	25MM B/SET BARBOLT DEADLOCK MONITORED	£75.60
2200-150	25MM B/SET HOOKBOLT DEADLOCK	£14.77
2200-150-02	25MM B/SET HOOKBOLT DEADLOCK MONITORED	£75.60
2200-153	25MM B/SET HOOKBOLT DEADLOCK RIVNUT	£16.22
2200-210	30MM B/SET BARBOLT DEADLOCK	£14.77
2200-210-02	30MM B/SET BARBOLT DEADLOCK MONITORED	£75.60
2200-250	30MM B/SET HOOKBOLT DEADLOCK	£14.77
2200-250-02	30MM B/SET HOOKBOLT DEADLOCK MONITORED	£75.60
2200-253	30MM B/SET HOOKBOLT DEADLOCK RIVNUT	£16.22
2200-350	40MM B/SET HOOKBOLT DEADLOCK	£14.77
2200-350-02	40MM BACKSET HOOKLOCK DEADLOCK MONITORED	£75.60
2200 Maximum Security Deadlock		
Faceplates		
24-2200-010-313	MS2200 FACEPLATE	£6.75
24-2200-010-335	MS2200 FACEPLATE	£6.05
24-2200-010-628	MS2200 FACEPLATE	£4.46
24-2200-050-313	MS2200 FACEPLATE	£5.05
24-2200-050-335	MS2200 FACEPLATE	£6.05
24-2200-050-628	MS2200 FACEPLATE	£4.46
24-2200-053-628	MS2200 FACEPLATE WITHOUT DETENT	£4.46
24-2200-110-628	MS2200 FACEPLATE	£4.46
24-2200-150-313	MS2200 FACEPLATE RADIUS HOOK LOCK	£5.08
24-2200-150-628	MS2200 FACEPLATE	£4.46
24-2200-250-628	MS2200 FACEPLATE	£4.46
24-2200-350-628	MS2200 FACEPLATE	£4.46
24-2200-410-628	MS2200 FACEPLATE	£5.05
24-2200-450-628	MS2200 FACEPLATE	£5.05
24-2200-557-630	MS2200 STAINLESS STEEL FORE END	£36.98
Sentinel 6 Extreme Security Deadlock		
Lockcase		
2600-200	SENTINEL 6 DEADLOCK 25MM BACKSET	£22.00
2600-300	SENTINEL 6 DEADLOCK 30MM BACKSET	£22.00
2600-400	SENTINEL 6 DEADLOCK 40MM BACKSET	£22.00
Sentinel 6 Extreme Security Deadlock		
Faceplates & Accessories		
24-2627-010-628	SENTINEL FLAT FACEPLATE SAA	£4.46
24-2627-110-628	SENTINEL RADIUS FACEPLATE SAA	£4.46
24-2627-410-628	SENTINEL RADIUS WEATHERSTRIP FACEPLATE SAA	£5.25
24-2627-510-630	SENTINEL U SHAPE STAINLESS STEEL FACEPLATE	£4.46
2627-010	SENTINEL ARMoured STRIKE	£7.71
2627-012-628	SENTINEL FLAT ARMoured TRIM STRIKE SAA	£9.66
2627-112-628	SENTINEL RADIUS ARMoured TRIM STRIKE SAA	£9.66
91-2627-001	SENTINEL CRANKED FIX TABS 10 PK	£27.93
91-2627-002	SENTINEL FLAT FIX TABS 10 PK	£27.93

MECHANICAL LOCKING		
Ordering Code	Description	List Price (Ex. VAT)
MS4000	Armoured Parts, Trim Strikes and Box Strikes	
22-0061-01	DUST BOX FOR SWING DOOR	£4.87
4000-011-628	TRIM STRIKE BAR BOLT SAA FLAT	£7.25
4000-012-628	TRIM STRIKE BAR BOLT SAA FLAT	£7.25
4000-031-628	TRIM STRIKE HOOK BOLT SAA FLAT	£7.25
4000-032-628	TRIM STRIKE HOOK BOLT SAA FLAT	£7.25
4000-112-628	TRIM STRIKE BAR BOLT SAA RADIUS	£7.25
4000-132-628	TRIM STRIKE HOOK BOLT SAA RADIUS	£7.25
4002-010	ARMOUR PART FOR USE WITH MS1850	£7.71
4002-010-01	MONITORED ARMoured PART	£50.75
4002-050	ARMOUR PART FOR USE WITH MS1850	£7.71
4051-012-313	TRIM STRIKE BAR LOCK BRONZE FLAT	£13.39
4051-012-628	TRIM STRIKE BAR LOCK SAA FLAT	£9.66
4051-032-628	TRIM STRIKE HOOK LOCK SAA FLAT	£9.66
4051-112-628	TRIM STRIKE BAR LOCK SAA RADIUS	£9.66
4051-132-628	TRIM STRIKE HOOK LOCK SAA RADIUS	£9.66
4052-010	ARMOUR PART FOR USE WITH 1800/2200	£7.71
4052-010-01	MONITORED ARMoured PART	£42.74
4052-050	ARMOUR PART FOR USE WITH 1800/2200	£7.71
4150-032-628	TRIM STRIKE FOR MS1800 WITH BALL	£62.48
4505-01-630	LATCH LOCK STRIKE FLAT ALUMINIUM	£31.58
4505-02-630	LATCH LOCK STRIKE RADIUS ALUMINIUM	£31.58
4505-17-630	LATCH LOCK STRIKE FLAT ALUMINIUM	£41.82
4505-21-630	LATCH LOCK STRIKE FLAT ALUMINIUM	£48.71
4015/4022	Threshold Bolts For MS1850/MS2200 Deadlocks	
4015-18	ROD AND BOLT KIT FOR MS1850	£36.74
4022-18	ROD AND BOLT KIT FOR MS2200	£36.74
4085	Header Bolt	
4085-01	HEADER BOLT ALUMINIUM	£91.15
1860	Ultra Narrow-Stile Deadlock	
1860	MS 1860 NARROW STILE LOCK	£83.62
1861	Bottom-Rail Deadlock	
1861-01	MS1861-01-603	£90.09
1870	Flushbolts	
1870-200	CYL OPERATED FLUSHBOLT 31/32 B/SET	£67.31
1870-300	CYL OPERATED FLUSHBOLT 1 1/8 B/SET	£67.31
1870	Faceplates	
24-1870-100-628	MS1870 FACEPLATE	£5.88
24-1870-200-628	MS1870 FACEPLATE	£5.88
24-1870-400-628	MS1870 FACEPLATE	£15.95
1880	Two-Point Bolt	
1880	MS1880-01-682 TWO WAY BOLT MECHANISM	£133.64

MECHANICAL LOCKING		
Ordering Code	Description	List Price (Ex. VAT)
MS1900	Multipoint Locking System	
1900-01-01-CM-UK	MS1900 SERIES HOOK LOCK SINGLE POINT	£23.39
1900-01-02-CM	MS1900 SERIES HOOK LOCK TWO POINT	£48.50
MS1848	Deadlock and Accessories	
1000-01-21-682	ALUMINIUM TURN	£7.22
1000-02-21-682	ALUMINIUM TURN	£7.22
1848-11	MS1848-11 DEADLATCH	£10.21
1848-29	MS1848-29 DEADLOCK	£9.21
23-0064-23-130	4025 BLOCK ONLY	£18.16
23-0076-130	4024 BLOCK ONLY	£14.41
25-0091	SHIM FOR USE WITH 4801 STRIKE	£1.14
4801	4801 STRIKE ALUMINIUM FOR PATIO DOOR LOCKS	£7.58
4804	REINFORCED STRIKE FOR 1848 PATIO	£2.66
8346-01	WEISER CYLINDER KD	£28.40
8346-02	WEISER CYLINDER KA2	£56.80
8346-03	WEISER CYLINDER KA	£28.40
5300	Series Lockset	
5302	5302 LOCKSET	£36.56
5325	5325 CYLINDER KIT	£44.10
4189 and 4190	Flush Handle Sets (use with MS1848 Deadlock)	
4189-00-01-121	LOCKSET NO CYLINDER BRONZE	£23.88
4189-00-01-130	LOCKSET NO CYLINDER ALUMINIUM	£23.88
4190-00-01-130KD	LOCKSET C/W CYLINDER ALUMINIUM	£63.83
4413	4413 INTERIOR PULL HANDLE PLASTIC	£11.21
5015	Deadlock and Accessories	
1015-11-32-130	ALUMINIUM TURN	£13.96
1016-130	BACK PLATE FOR 1015 TURN	£9.16
4026-130	BLOCK ONLY	£19.93
4808-01-603	STRIKE FOR PATIO SLIDING DOOR	£2.94
5015	5015 DEADLOCK	£14.65
6201	Flushbolt	
6201-6-12	FLUSH BOLT FLAT SAA 12" ROD	£8.40
6201-7-12	FLUSH BOLT RADIUS SAA 12" ROD	£8.40

MECHANICAL LOCKING		
Ordering Code	Description	List Price (Ex. VAT)
4710	Heavy Duty Deadlatch - Lockcase	
4710-100-5	DEADLATCH 7/8 BACKSET BODY ONLY LH	£59.10
4710-100-6	DEADLATCH 7/8 BACKSET BODY ONLY RH	£59.10
4710-200-5	DEADLATCH 31/32 BACKSET BODY ONLY LH	£59.10
4710-200-6	DEADLATCH 31/32 BACKSET BODY ONLY RH	£59.10
4710-300-5	DEADLATCH 1 1/8 BACKSET BODY ONLY LH	£59.10
4710-300-6	DEADLATCH 1 1/8 BACKSET BODY ONLY RH	£59.10
4710-400-5	DEADLATCH 1 1/2 BACKSET BODY ONLY LH	£59.10
4710-400-6	DEADLATCH 1 1/2 BACKSET BODY ONLY RH	£59.10
4720ANSI	Deadlatch - Lockcase	
4720-401-5	4720 ANSI DEADLATCH FOR TIMBER LH	£108.26
4720-401-6	4720 ANSI DEADLATCH FOR TIMBER RH	£108.26
4720ANSI	Deadlatch - Faceplates	
24-4720-001-628	4720 ANSI FLAT FACEPLATE	£5.98
24-4720-101-628	4720 ANSI RADIUS FACEPLATE	£5.98
4750	Deadlatch - Lockcase	
4750-200-5	DEADLATCH 24MM BACKSET BODY ONLY LH	£59.10
4750-200-6	DEADLATCH 24MM BACKSET BODY ONLY RH	£59.10
4750-300-5	DEADLATCH 28MM BACKSET BODY ONLY LH	£59.10
4750-300-6	DEADLATCH 28MM BACKSET BODY ONLY RH	£59.10
4750-400-5	DEADLATCH 37MM BACKSET BODY ONLY LH	£59.10
4750-400-6	DEADLATCH 37MM BACKSET BODY ONLY RH	£59.10
4710 & 4750	Deadlatch - Faceplates	
24-4700-000-628	4700 SERIES FLAT FACEPLATE SAA	£4.54
24-4700-100-628	4700 SERIES RADIUS FACEPLATE SAA	£4.54
24-4700-200-628	4700 SERIES LH BEVEL FACEPLATE SAA	£5.89
24-4700-300-628	4700 SERIES RH BEVELFACEPLATE SAA	£5.89
24-4700-400-628	4700 SERIES RADIUS WEATHERSTRIP FACEPLATE SAA	£6.75
8360,8460 and 8461	Ramp Jaw Strikes	
8360-01-630	LATCH STRIKE FOR 8300	£22.85
8460-01-630	LATCH STRIKE FOR 4900	£20.86
8460-02-630	LATCH STRIKE RADIUS ALUMINIUM	£26.37
8460-07-630	RADIUS STRIKE FOR 940 SERIES	£17.75
8460-17-630	4" EXTENDED STRIKE FOR 4900	£32.80
8460-21-630	4.5" EXTENDED STRIKE FOR 4900	£32.80
8461-01-630	LATCH STRIKE FOR USE WITH 4500/4700	£17.75
8461-02-630	LATCH STRIKE RADIUS ALUMINIUM	£17.75
8461-17-630	4" EXTENDED STRIKE FOR 4500/4700	£31.36
8461-21-630	4.5" EXTENDED STRIKE FOR 4500/4700	£31.36
4561 and 4565	Lever Handle and Thumbturn	
4561-001-119	LEVER HANDLE BLACK ESCUTCHEON	£69.65
4561-011-130	LEVER HANDLE SAA ESCUTCHEON	£62.03
4561-012-130	LEVER HANDLE SAA ESCUTCHEON	£81.57
4565-011-130	THUMBTURN SAA	£59.96
4565-012-130	THUMBTURN SAA FOR MS1890 SERIES	£59.96
4580-02	CAM PLUG REVERSIBLE. 51MM DOOR	£13.66
4568	Lever Handle	
4568-501-130	LEVER HANDLE C/W CAM PLUG LH SILVER	£56.20
4568-601-130	LEVER HANDLE C/W CAM PLUG RH SILVER	£56.20
4568-011-121	LEVER HANDLE BRONZE	£50.33
4568-011-130	LEVER HANDLE SILVER RITECOAT FINISH	£40.13
4568-011-335	LEVER HANDLE BLACK	£50.49
4568-012-121	LEVER HANDLE BRONZE PAINTED FINISH	£55.14
4568-012-130	LEVER HANDLE SILVER RITECOAT FINISH	£40.13
4568-012-335	LEVER HANDLE BLACK FINISH	£40.13

MECHANICAL LOCKING		
Ordering Code	Description	List Price (Ex. VAT)
4591	Paddle Handle	
4590-00-628	TIMBER MOUNTING PLATE FOR 4591 PADDLE	£47.78
4591-01-01-628	PULL TO LEFT PADDLE HANDLE SAA	£111.79
4591-02-00-628	PUSH TO LEFT PADDLE HANDLE SAA	£111.79
4591-02-01-628	PUSH TO LEFT PADDLE HANDLE SAA	£111.79
4591-02-02-628	PUSH TO LEFT PADDLE HANDLE SAA	£111.79
4591-02-04-628	PUSH TO LEFT PADDLE HANDLE SAA	£111.79
4591-02-628-01	PUSH TO LEFT PADDLE HANDLE SAA MONITORED	£199.60
4591-02-628-01-1	PUSH TO LEFT PADDLE HANDLE SAA MONITORED ACTIVE	£220.21
4591-03-01-628	PULL TO RIGHT PADDLE HANDLE SAA	£111.79
4591-03-02-628	PULL TO RIGHT PADDLE HANDLE SAA	£111.79
4591-04-00-628	PUSH TO RIGHT PADDLE HANDLE SAA	£111.79
4591-04-01-628	PUSH TO RIGHT PADDLE HANDLE SAA	£111.79
4591-04-02-628	PUSH TO RIGHT PADDLE HANDLE SAA	£111.79
4591-04-04-628	PUSH TO RIGHT PADDLE HANDLE SAA	£111.79
4591-04-628-01	PUSH TO RIGHT PADDLE HANDLE SAA MONITORED	£199.60
4591-04-628-01-1	PUSH TO RIGHT PADDLE HANDLE SAA MONITORED ACTIVE	£220.21
4591-11-00-628	PULL TO LEFT PADDLE HANDLE SAA	£99.42
4591-11-01-628	PULL TO LEFT PADDLE HANDLE SAA	£99.42
4591-12-00-628	PUSH TO LEFT PADDLE HANDLE SAA	£99.42
4591-12-01-628	PUSH TO LEFT PADDLE HANDLE SAA	£99.42
4591-13-00-628	PULL TO RIGHT PADDLE HANDLE SAA	£99.42
4591-13-01-628	PADDLE HANDLE PULL TO RIGHT SAA	£99.42
4591-14-00-628	PUSH TO RIGHT PADDLE HANDLE SAA	£99.42
4591-14-01-628	PUSH TO RIGHT PADDLE HANDLE SAA	£99.42
4596	Europrofile Operation Paddle Handle	
4596-01-01-628	EURO PADDLE HANDLE PULL TO LEFT SAA	£111.79
4596-01-03-628	EURO PADDLE HANDLE PULL TO LEFT SAA	£111.79
4596-02-01-313	EURO PADDLE HANDLE PUSH TO LEFT BRONZE	£111.79
4596-02-01-628	EURO PADDLE HANDLE PUSH TO LEFT SAA	£111.79
4596-02-02-628	EURO PADDLE HANDLE PUSH TO LEFT SAA	£111.79
4596-02-03-628	EURO PADDLE HANDLE PUSH TO LEFT SAA	£111.79
4596-03-01-628	EURO PADDLE HANDLE PULL TO RIGHT SAA	£111.79
4596-04-01-313	EURO PADDLE HANDLE PUSH TO RIGHT BRONZE	£111.79
4596-04-01-628	EURO PADDLE HANDLE PUSH TO RIGHT SAA	£111.79
4596-04-03-628	EURO PADDLE HANDLE PUSH TO RIGHT SAA	£111.79
4593	Latch Pull	
4593-07-130	STANDARD LATCH PULL TO RIGHT-RHR	£193.97
4593-08-130	STANDARD LATCH PULL TO LEFT-LHR	£193.97
4593E-07-130-12	ELECTRIC LATCH PULL TO RIGHT-RHR	£230.50
4593E-08-119-12	ELECTRIC LATCH PULL TO LEFT-LHR	£270.60
4070	Deadlock & Faceplates	
4070-10	DEADLOCK 7/8 BACKSET	£82.44
4070-20	DEADLOCK 31/32 BACKSET	£82.44
4070-30	DEADLOCK 1 1/8 BACKSET	£82.44
4170-628	TRIM STRIKE ALUMINIUM	£17.12
24-4070-000-628	4070 FLAT FACEPLATE SAA	£13.50
24-4070-100-628	4070 RADIUS FACEPLATE SAA	£13.50

MECHANICAL LOCKING		
Ordering Code	Description	List Price (Ex. VAT)
Kitemark Cylinder/ Thumbturn	Europrofile Type	
CL1-KB	KEY BLANK TO SUIT KM CYLINDER	£1.31
CL1-ES3515-SC-KD	SINGLE KM EUROPROFILE CYLINDER 35/15 KD SC FINISH	£10.70
CL1-ES3515-SC-KAX	SINGLE KM EUROPROFILE CYLINDER 35/15 KA (50) SETS SC FINISH	£12.33
CL1-ES3515-SC-KA2	SINGLE KM EUROPROFILE CYLINDER 35/15 KA2 SC FINISH	£24.65
CL1-ET3515-SC-KD	SINGLE KM EUROPROFILE THUMBTURN 35/15 SC FINISH	£15.20
CL1-ET5015-SC-KD	SINGLE KM EUROPROFILE THUMBTURN 50/15 SC FINISH	£18.20
CL1-ED3535-SC-KD	DOUBLE KM EUROPROFILE CYLINDER 35/35 KD SC FINISH	£14.75
CL1-ED3535-SC-KAX	DOUBLE KM EUROPROFILE CYLINDER 35/35 KA (50) SETS SC FINISH	£14.75
CL1-ED3535-SC-KA2	DOUBLE KM EUROPROFILE CYLINDER 35/35 KA2 SC FINISH	£29.50
CL1-ED4535-SC-KD	DOUBLE KM EUROPROFILE CYLINDER 45/35 KD SC FINISH	£16.10
CL1-ET3535-SC-KD	DOUBLE KM EUROPROFILE THUMBTURN 35/35 KD SC FINISH	£17.20
CL1-ET3535-SC-KAX	DOUBLE KM EUROPROFILE THUMBTURN 35/35 KA (50) SETS SC FINISH	£17.20
CL1-ET3535-SC-KA2	DOUBLE KM EUROPROFILE THUMBTURN 35/35 KA2 SC FINISH	£34.40
Thumbturns	Round Types	
4067-01-628	MORTICE THUMBTURN SAA	£23.94
4067-01-628-00	MORTICE THUMBTURN SAA NO SPR/BALL	£23.94
4067-01-628-3	MORTICE THUMBTURN SAA C/W 3MM RING	£23.94
4104 and 4075	Mounting Bridges and Installation Tool	
4075	4075 MOUNTING TOOL	£49.19
4104-01	RADIUS MOUNTING CLIPS IN PAIRS	£5.68
4104-12	FLAT MOUNTING CLIPS IN PAIRS	£5.68
4436	Lock Mounting Tab Kit	
4436	LOCK MOUNTING TAB KIT	£3.33
4550	Deadlock Lever	
4550-07-130	DEADLOCK LEVER HANDLE LHR OR RH	£160.99
4550-08-130	DEADLOCK LEVER HANDLE RHR OR LH	£160.99

MECHANICAL LOCKING		
Ordering Code	Description	List Price (Ex. VAT)
Cylinders	Europrofile Type and Escutcheons	
61-30-30-0-1	SOFI CYLINDER KD	£10.23
61-30-30-0-1-XX	FULL PROFILE CYLINDER KA IN SETS	£13.71
61-30-30-0-1-2	FULL PROFILE CYLINDER KA2	£27.43
61-30-45-0-1	FULL PROFILE CYLINDER KD	£12.09
61-35-35-0-1	FULL PROFILE CYLINDER KD	£16.82
61-35-35-0-1-01	FULL PROFILE CYLINDER KA SET A	£17.99
61-35-35-0-1-02	FULL PROFILE CYLINDER KA SET B 35-35	£17.99
61-35-35-0-1-2	FULL PROFILE CYLINDER KA2	£36.44
61-40-40-0-1	FULL PROFILE CYLINDER KD	£16.82
Thumbturns	Europrofile and Round Types	
4067-01-628	MORTICE THUMBTURN SAA	£23.94
4067-01-628-00	MORTICE THUMBTURN SAA NO SPR/BALL	£23.94
4067-01-628-3	MORTICE THUMBTURN SAA C/W 3MM RING	£23.94
61-30-30-1-1	FULL PROFILE CYLINDER C/W THUMBTURN KD	£11.18
61-30-30-1-1-01	FULL PROFILE CYLINDER C/W THUMBTURN KA	£14.72
61-30-30-1-1-02	FULL PROFILE CYLINDER C/W THUMBTURN KA	£14.72
61-30-30-1-1-2	FULL PROFILE CYLINDER C/W THUMBTURN KA2	£29.44
61-35-35-1-1	FULL PROFILE CYLINDER KD C/W T TURN	£20.06
61-35-35-1-1-01	FULL PROFILE CYLINDER KA C/W T TURN SET 1	£20.06
61-35-35-1-1-2	FULL PROFILE CYLINDER C/W THUMBTURN KA2	£39.12
4104 and 4075	Mounting Bridges and Installation Tool	
4075	4075 MOUNTING TOOL	£49.19
4104-01	RADIUS MOUNTING CLIPS IN PAIRS	£5.68
4104-12	FLAT MOUNTING CLIPS IN PAIRS	£5.68
4436	Lock Mounting Tab Kit	
4436	LOCK MOUNTING TAB KIT	£3.33
4550	Deadlock Lever	
4550-07-130	DEADLOCK LEVER HANDLE LHR OR RH	£160.99
4550-08-130	DEADLOCK LEVER HANDLE RHR OR LH	£160.99

PULL HANDLES		
Ordering Code	Description	List Price (Ex. VAT)
Pull Handles	Rigel Straight Range	
AH1-21-32-300-SS-1	Rigel Straight Pull Handle Diameter - 32mm Length - 300mm SS Single cw fixings	£51.25
AH1-21-32-400-SS-1	Rigel Straight Pull Handle Diameter - 32mm Length - 400mm SS Single cw fixings	£57.50
AH1-21-32-300-PS-1	Rigel Straight Pull Handle Diameter - 32mm Length - 300mm PS Single cw fixings	£71.25
AH1-21-32-400-PS-1	Rigel Straight Pull Handle Diameter - 32mm Length - 400mm PS Single cw fixings	£78.00
AH1-21-32-300-SS-2	Rigel Straight Pull Handle Diameter - 32mm Length - 300mm SS Pair cw BTB fixings	£102.50
AH1-21-32-400-SS-2	Rigel Straight Pull Handle Diameter - 32mm Length - 400mm SS Pair cw BTB fixings	£115.00
AH1-21-32-300-PS-2	Rigel Straight Pull Handle Diameter - 32mm Length - 300mm PS Pair cw BTB fixings	£142.50
AH1-21-32-400-PS-2	Rigel Straight Pull Handle Diameter - 32mm Length - 400mm PS Pair cw BTB fixings	£156.00
Pull Handles	Rigel Offset Cranked Range	
AH1-22-32-300-SS-1	Rigel Offset Cranked Pull Handle Diameter - 32mm Length - 300mm SS Single cw fixings	£56.50
AH1-22-32-400-SS-1	Rigel Offset Cranked Pull Handle Diameter - 32mm Length - 400mm SS Single cw fixings	£58.50
AH1-22-32-300-PS-1	Rigel Offset Cranked Pull Handle Diameter - 32mm Length - 300mm PS Single cw fixings	£78.25
AH1-22-32-400-PS-1	Rigel Offset Cranked Pull Handle Diameter - 32mm Length - 400mm PS Single cw fixings	£82.50
AH1-22-32-300-SS-2	Rigel Offset Cranked Pull Handle Diameter - 32mm Length - 300mm SS Pair cw BTB fixings	£113.00
AH1-22-32-400-SS-2	Rigel Offset Cranked Pull Handle Diameter - 32mm Length - 400mm SS Pair cw BTB fixings	£117.00
AH1-22-32-300-PS-2	Rigel Offset Cranked Pull Handle Diameter - 32mm Length - 300mm PS Pair cw BTB fixings	£156.50
AH1-22-32-400-PS-2	Rigel Offset Cranked Pull Handle Diameter - 32mm Length - 400mm PS Pair cw BTB fixings	£165.00
Pull Handles	Rigel Circular C Range	
AH1-23-32-350-SS-1	Rigel Circular C Pull Handle Diameter - 32mm Length - 350mm SS Single cw fixings	£72.50
AH1-23-32-350-PS-1	Rigel Circular C Pull Handle Diameter - 32mm Length - 350mm PS Single cw fixings	£91.00
AH1-23-32-350-SS-2	Rigel Circular C Pull Handle Diameter - 32mm Length - 350mm SS Pair cw BTB fixings	£145.00
AH1-23-32-350-PS-2	Rigel Circular C Pull Handle Diameter - 32mm Length - 350mm PS Pair cw BTB fixings	£182.00
Pull Handles	Rigel Spigot Mounted C Range	
AH1-24-32-300-SS-1	Rigel Spigot Mounted C Pull Handle Diameter - 32mm Length - 300mm SS Single cw fixings	£75.00
AH1-24-32-300-PS-1	Rigel Spigot Mounted C Pull Handle Diameter - 32mm Length - 300mm PS Single cw fixings	£124.75
AH1-24-32-300-SS-2	Rigel Spigot Mounted C Pull Handle Diameter - 32mm Length - 300mm SS Pair cw BTB fixings	£150.00
AH1-24-32-300-PS-2	Rigel Spigot Mounted C Pull Handle Diameter - 32mm Length - 300mm PS Pair cw BTB fixings	£249.50

PEMKO PRODUCTS		
Ordering Code	Description	List Price (Ex. VAT)
Self-adhesive Perimeter Gasketing		
S44D17	SINGLE FIN GASKET 5.1M DARK BROWN	£13.48
S44D21	SINGLE FIN GASKET 6.4M DARK BROWN	£16.67
S44D510	SINGLE FIN GASKET 155M DARK BROWN	£350.74
S44W17	SINGLE FIN GASKET 5.1M WHITE	£13.48
S44W21	SINGLE FIN GASKET 6.4M WHITE	£16.67
S44W510	SINGLE FIN GASKET 155M WHITE	£350.74
S773D17	TRIPLE FIN GASKET 5.1M DARK BROWN	£26.19
S773D21	TRIPLE FIN GASKET 6.4M DARK BROWN	£32.33
S773D25	TRIPLE FIN GASKET 7.6M DARK BROWN	£38.46
S773W17	TRIPLE FIN GASKET 5.1M WHITE	£26.19
S773W21	TRIPLE FIN GASKET 6.4M WHITE	£32.33
S773W25	TRIPLE FIN GASKET 7.6M WHITE	£38.46
S88D17	TEAR DROP GASKET 5.1M DARK BRONZE	£14.37
S88D21	TEAR DROP GASKET 6.4M DARK BRONZE	£17.72
S88D510	TEAR DROP GASKET 155M DARK BRONZE	£374.48
S88G510	TEAR DROP GASKET 155M GREY	£374.48
S88W17	TEAR DROP GASKET 5.1M WHITE	£14.37
S88W21	TEAR DROP GASKET 6.4M WHITE	£17.72
S88W510	TEAR DROP GASKET 155M WHITE	£374.48
Surface Mounted Perimeter Gasketing		
29310CPK10	PERIMETER GASKETING 3M CLEAR ALUMINIUM	£46.36
29310CPK7	PERIMETER GASKETING 2.1M CLEAR ALUMINIUM	£32.49
316APK10	PERIMETER GASKETING 3M MILL ALUMINIUM	£15.12
316APK7	PERIMETER GASKETING 2.1M MILL ALUMINIUM	£10.57
Automatic Door Bottoms		
411APKL36	AUTOMATIC DOOR BOTTOM 0.914M BLACK	£27.86
411APKL40	AUTOMATIC DOOR BOTTOM 1.016M BLACK	£30.96
411APKL48	AUTOMATIC DOOR BOTTOM 1.219M BLACK	£34.97
4131CPKL36	AUTOMATIC DOOR BOTTOM 0.914M BLACK	£34.89
4131CPKL40	AUTOMATIC DOOR BOTTOM 1.016M BLACK	£38.78
4131CPKL48	AUTOMATIC DOOR BOTTOM 1.219M BLACK	£43.67

PEMKO PRODUCTS		
Ordering Code	Description	List Price (Ex. VAT)
Thresholds & Saddles		
173A120	57MM SADDLE 3M MILL FINISH	£32.33
173A40	57MM SADDLE 1M MILL FINISH	£10.80
173A48	57MM SADDLE 1.2M MILL FINISH	£12.95
270A120	101MM SADDLE 3M MILL FINISH	£49.58
270A40	101MM SADDLE 1M MILL FINISH	£16.56
270A48	101MM SADDLE 1.2M MILL FINISH	£19.81
271A120	127MM SADDLE 3M MILL FINISH	£78.21
271A40	127MM SADDLE 1M MILL FINISH	£26.23
271A48	127MM SADDLE 1.2M MILL FINISH	£31.47
2001AT120	127MM THRESHOLD + THERMOSEAL 3M MILL FINISH	£94.79
2001AT40	127MM THRESHOLD + THERMOSEAL 1M MILL FINISH	£31.63
2001AT48	127MM THRESHOLD + THERMOSEAL 1.2M MILL FINISH	£37.94
2002AQ120	79MM THRESHOLD + FOAMSEAL 3M MILL FINISH	£52.55
2002AQ36	79MM THRESHOLD + FOAMSEAL 0.9M MILL FINISH	£15.83
2002AQ40	79MM THRESHOLD + FOAMSEAL 1M MILL FINISH	£17.55
2002AQ48	79MM THRESHOLD + FOAMSEAL 1.2M MILL FINISH	£21.09
2002AQ84	79MM THRESHOLD + FOAMSEAL 2.1M MILL FINISH	£36.79
Acoustic Corner Pad		
ACP112BL	ACOUSTIC CORNER PAD BLACK FINISH	£1.87
ACP112W	ACOUSTIC CORNER PAD WHITE FINISH	£1.87
Door Shoes		
210APK40	PEMKOPRENE DOOR SHOE 1M WITH DRIP BAR	£9.71
210APK48	PEMKOPRENE DOOR SHOE 1.2M WITH DRIP BAR	£11.66
234APK40	PEMKOPRENE DOOR SHOE 1M	£9.02
234APK48	PEMKOPRENE DOOR SHOE 1.2M	£10.80
234APK89	PEMKOPRENE DOOR SHOE 2.2M	£20.01
Door Bottom Rain Drip		
345A40	DOOR BOTTOM RAIN DRIP BAR 1M	£5.44
345A48	DOOR BOTTOM RAIN DRIP BAR 1.2M	£6.49
345VA40	DOOR BOTTOM DRIP BAR WITH VINYL SEAL 1M	£34.40
Overhead Drip Bar		
346C126	OVERHEAD DRIP BAR 3.2M	£39.01
346C48	OVERHEAD DRIP BAR 1.2M	£15.12

Glossary

Backset:	The horizontal dimension from the front of the faceplate to the centre of the cylinder.
Cam:	The part on the back of a cylinder that rotates when the key is turned and operates the lock mechanism.
Deadbolt:	A lockbolt having no spring action, usually rectangular and actuated by cylinder or thumbturn.
Deadlatch:	A lock with a radiused or bevelled spring-loaded latchbolt which may be automatically or manually locked against unauthorised retraction and will self latch when the door returns to the closed position.
Dogging Facility:	The means of retaining the lockbolt or exit device mechanism in the openposition to allow the door to be free swinging.
Escutcheon:	A plate either protective or ornamental that slips over the cylinder, thumbturn, handle etc. and is fixed to the stile of the door.
Panic Exit Device:	Horizontal bar running the full width of the door where activation of the bar in the direction of travel releases the locking mechanism. Such devices must conform to BS EN 1125.
Emergency Escape Device: con	A paddle handle or lever handle fitted to a designated emergency escape door forming to BS EN 179.
Keying:	Keyed Alike (KA) and Keyed Alike in Pairs (KA2)—all cylinders may be operated by the same key. Keyed Different (KD)—different individual key operates each cylinder or group of cylinders.
Solenoid:	When energised with electrical current develops a magnetic pull motion enabling mechanical work to be effected, such as plunger movement to release the blocking arm on electric strikes.

**Adams Rite Europe Limited
The Meadows, Cannock Road
Wolverhampton WV10 0RR, United Kingdom**

Registered in England No. 1217948 VAT Registration No. GB 207 0718 89

Customer Services Department

Telephone: +44 (0)845 8734838

Fax: +44 (0)845 8734839

Email: info@adamsrite.co.uk

Technical Support

Telephone: +44 (0)845 8734837

Web Site

www.adamsrite.co.uk

Distributors

Please contact our Customer Services Department who will be able to advise you who your local distributor is.