

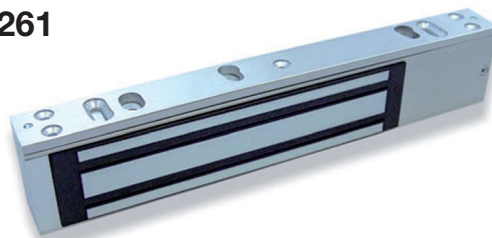
# Armlock® 261 & 262

## Direct-Pull Magnets

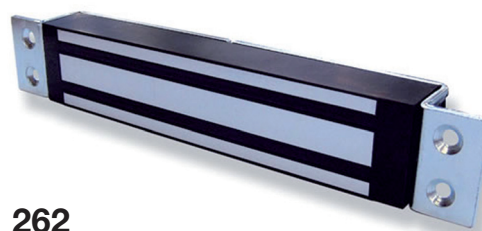


The Adams Rite Door magnet range are direct pull magnets that are used as part of an access control system for electric locking applications.

261



262



### Key Benefits

- Suitable for use on aluminium, timber and steel doors
- Compact case size & clean aesthetics
- Maintains a magnetic holding force of at least 250kg (550lbs)
- Strong durability & low maintenance
- Fit any aluminium, timber or steel door
- CE marked
- Has a security pin feature to help prevent unauthorised brackets removal of the magnet from the door frame fixing plate
- Available for outward and inward opening door applications
- User selectable dual voltage - 12 or 24vDC
- Also available as a double magnet model
- Surface or mortice version
- Monitoring available (Hall Effect)
- Built in voltage spike suppressor

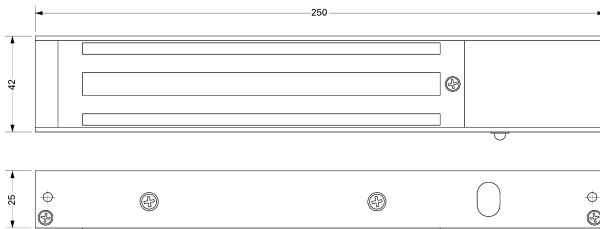
### Related Hardware

'L' and 'Z' Brackets ~ Armature Housing ~ 4591M & 999M Monitored Paddle Handle & Exit Device ~ Switching Accessories ~ RiteKey Keypad ~ Push-to-Exit Button ~ Power Supply Unit

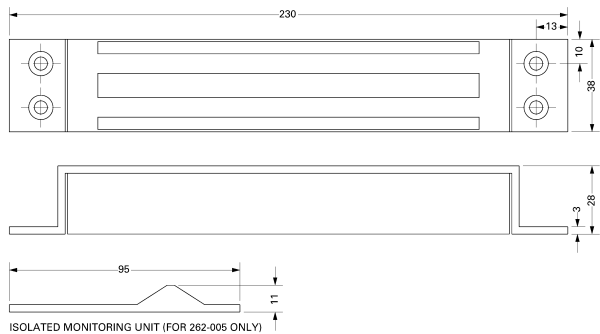
**Note:** For out of hours security specify the Sentinel 6 Deadlock in conjunction with the direct-pull magnet.

## Dimensions

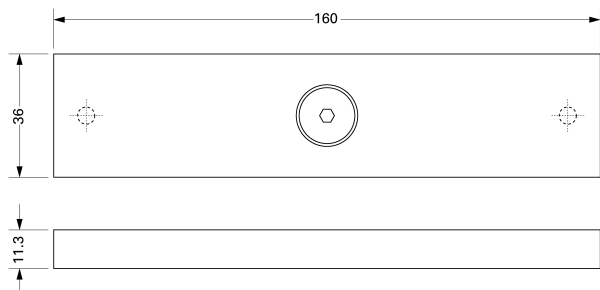
### Armlock® 261-005



### Armlock® 262-005

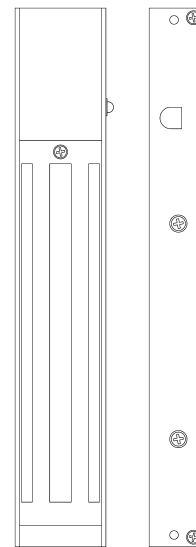


### Armature for Armlock 260® Series Magnets



## Specifications

<b>Single Magnet:</b>	25mm x 250mm x 42mm (261 models). 28mm x 230mm x 38mm (262 model).
<b>Double Magnet:</b>	25mm x 500mm x 42mm (261 models only).
<b>Armature:</b>	11.3mm x 160mm x 36mm (2 no. for double magnet).
<b>Nominal Holding Force:</b>	250kg (550lbs).
<b>Supply Voltage:</b>	12 or 24vDC (±15%). Dual coil.
<b>Nominal Current:</b>	480mA @ 12vDC, 240mA @ 24vDC. Built-in voltage spike suppressor.
<b>Monitoring:</b>	Relay dry contact with LED. Integral on 261 models, compact isolated unit on 262-005.
<b>Door Gap:</b>	Maximum 3mm (1/8").
<b>261 Positioning:</b>	Outward opening - surface mounted to door frame header. Inward opening - door frame header using 'L' & 'Z' brackets.
<b>262 Positioning:</b>	Mortice mounted for single action swinging or sliding door applications (not to be used as a shearlock).
<b>Magnet Housing:</b>	Brushed satin aluminium.
<b>Note:</b>	To achieve immediate release, it is important that the release switch breaks the circuit on the positive supply to the magnet.



## Ordering Codes

- 261-000** Surface mounted single direct-pull magnet, 12/24vDC, non-monitored, suitable for timber or metal door applications.
- 261-200** Surface mounted double direct-pull magnet, 12/24vDC, non-monitored, suitable for timber or metal door applications.
- 261-005** Surface mounted single direct-pull magnet, 12/24vDC, monitored, suitable for timber or metal door applications.
- 261-205** Surface mounted double direct-pull magnet, 12/24vDC, monitored, suitable for timber or metal door applications.
- 262-005** Mortice mounted single direct-pull magnet, 12/24vDC, monitored, complete with armature fixings for timber and metal doors.
- 268-600** Armlock® 260/280 Series glass armature bracket.

### Parts

- 261-300** Spare armature plate only for 260 series.
- 261-015** Surface mounted magnets & armature fixings only for 260 series.