

# MS<sup>®</sup> 2200

## Maximum Security Deadlock

The Adams Rite MS<sup>®</sup> 2200 deadlock provides maximum security locking for both swing and sliding aluminium doors using a europrofile cylinder.



### Key Benefits

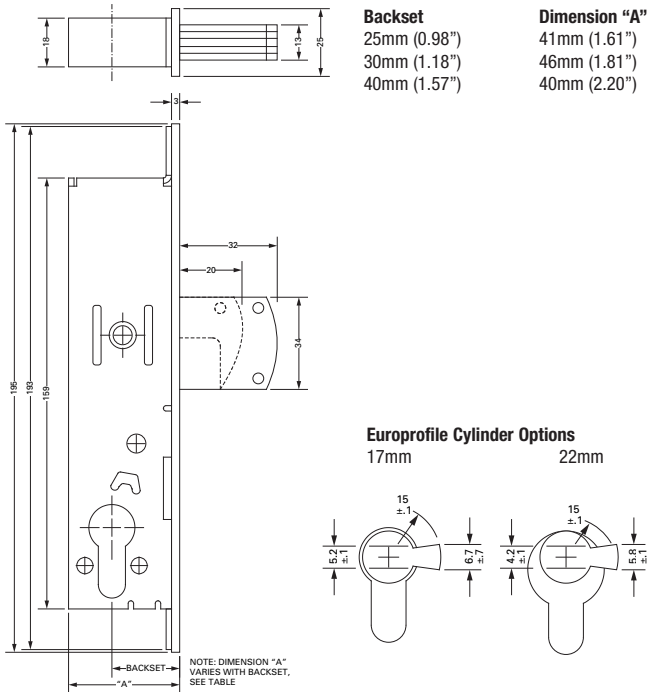
- 2/3 point locking available when used with 4022-18 kit.
- Alumina ceramic core in bolt to prevent hacksaw attack.
- Retains the same uncomplicated pivot mechanism and all the security features associated with the other MS<sup>®</sup> Deadlocks.
- The MS<sup>®</sup> 2200 lockbody has been designed to cater for 17mm Europrofile as standard.
- Riv-nut fixing version available.
- Available on aluminium and steel doors.
- Version to suit 22mm Kaba Europrofile cylinder available.

### Related Hardware

Europrofile Cylinders and Escutcheons

MS<sup>®</sup> 4000 Armoured Parts ~ 4022-18 Header/Threshold Bolt

## Dimensions



## Specifications

<b>Overall Case Size:</b>	195mm x 25mm x 41mm (25mm Backset) 195mm x 25mm x 46mm (30mm Backset) 195mm x 25mm x 56mm (40mm Backset).
<b>Case:</b>	Steel with corrosion-resistant plating.
<b>Backset:</b>	25mm, 30mm, 40mm (40mm option: hookbolt version only).
<b>Bolt Throw:</b>	32mm (Bar); 20mm (Hook).
<b>Lock Bolt:</b>	34mm x 13mm. 5 Ply Laminated Steel with Alumina-Ceramic Anti-Saw Core (Stainless steel lockbolt option available on certain models).
<b>Forend:</b>	Steel with aluminium faceplate.
<b>Mechanism:</b>	Carbon Steel Actuating Mechanism.
<b>Cylinder:</b>	Any standard 17mm Europrofile Cylinder/Thumbturn or 22mm Kaba Profile Cylinder/Thumbturn.
<b>Operation:</b>	MS <sup>®</sup> 2200 - 17mm Europrofile Cylinder MS <sup>®</sup> 2210 - 22mm Kaba Profile Cylinder 360° turn of key or thumbturn. Key only removable when bolt is positively locked or unlocked.
<b>Faceplate Finishes:</b>	628 Satin Aluminium, 313 Bronze, 335 Black.
<b>Door Type:</b>	Aluminium or Steel.
<b>Two/Three Point Locking:</b>	Specify 4022-18 (1 or 2 no.) (Not available in 40mm backset).
<b>Monitoring Facility:</b>	Optional via Microswitch within case.

## Ordering Codes

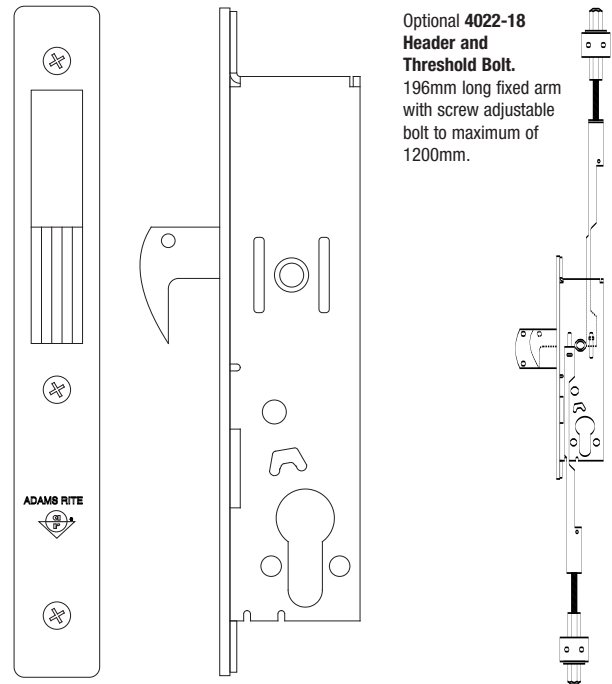
### Lock Bodies

<b>2200-110</b>	25mm Backset Barbolt Deadlock 17mm Cylinder
<b>2200-150</b>	25mm Backset Hookbolt Deadlock 17mm Cylinder
<b>2200-150-02</b>	25mm Backset Hookbolt Deadlock 17mm Cylinder Monitored
<b>2200-210</b>	30mm Backset Barbolt Deadlock 17mm Cylinder
<b>2200-250</b>	30mm Backset Hookbolt Deadlock 17mm Cylinder
<b>2200-250-02</b>	30mm Backset Hookbolt Deadlock 17mm Cylinder Monitored
<b>2200-350</b>	40mm Backset Hookbolt Deadlock 17mm Cylinder
<b>2200-350-02</b>	40mm Backset Hookbolt Deadlock 17mm Cylinder Monitored
<b>2210-110</b>	25mm Backset Barbolt Deadlock 22mm Cylinder
<b>2210-150</b>	25mm Backset Hookbolt Deadlock 22mm Cylinder
<b>2210-210</b>	30mm Backset Barbolt Deadlock 22mm Cylinder
<b>2210-250</b>	30mm Backset Hookbolt Deadlock 22mm Cylinder

### Faceplates

<b>24-2200-010-628</b>	MS <sup>®</sup> 2200 Faceplate Flat Bar Lock SAA Finish
<b>24-2200-050-628</b>	MS <sup>®</sup> 2200 Faceplate Flat Hook Lock SAA Finish
<b>24-2200-110-628</b>	MS <sup>®</sup> 2200 Faceplate Radius Bar Lock SAA Finish
<b>24-2200-150-628</b>	MS <sup>®</sup> 2200 Faceplate Radius Hook Lock SAA Finish
<b>24-2200-250-628</b>	MS <sup>®</sup> 2200 Faceplate Left Hand Bevel Hook Lock SAA Finish
<b>24-2200-350-628</b>	MS <sup>®</sup> 2200 Faceplate Right Hand Bevel Hook Lock SAA Finish
<b>24-2200-410-628</b>	MS <sup>®</sup> 2200 Faceplate Radius Weatherstrip Bar Lock SAA Finish
<b>24-2200-450-628</b>	MS <sup>®</sup> 2200 Faceplate Radius Weatherstrip Hook Lock SAA Finish

**Note:** The MS<sup>®</sup>2200 is available with Rivnut fixing - change last digit of code to '3' e.g. 2200-113. Cylinders, thumbturns and faceplates not supplied as standard; order separately. 40mm backset option available in 17mm Europrofile cylinder hookbolt version only.



**Note:** 628 denotes Satin Anodised Finish-substitute 628 with 313 for Bronze, or 335 for Black. Always order a barbolt faceplate when using the 40mm backset hookbolt version.