

Changing From Fail-Safe to Fail-Secure & Vice-Versa:

- 1) Remove faceplate, subcover (2), & cover (1)
- 2) Remove latch (7), blocking arm (6), blocking arm return spring (16), & retainer plate (15)

Changing From Fail-Secure to Fail-Safe:

- 1) With bolt facing you remove solenoid (3), plunger (4), & shuttle return spring (5).
- 2) Place shuttle return spring (5) on left-hand side of shuttle (17). Place solenoid and plunger facing the side opposite of shuttle return spring into groove on the shuttle. (See page three for diagram)
- 3) Place retainer plate on top of solenoid and place latch, blocking arm & blocking arm return spring in original position.

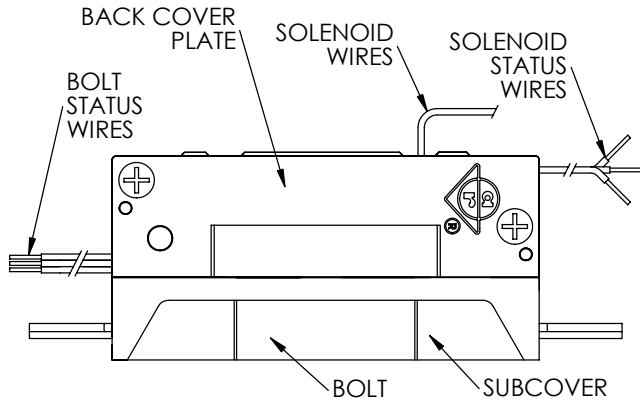
Note: Fail-safe must be continuous duty only.

Changing from Fail-safe to Fail-secure:

- 1) With bolt facing you remove solenoid (3), plunger (4) & shuttle return spring (5).
- 2) Place shuttle return spring (5) on right hand side of shuttle (17). Place solenoid and plunger facing the side opposite of shuttle return spring into groove on shuttle. (See page three for diagram)
- 3) Place retainer plate on top of solenoid and place latch, blocking arm & blocking arm return spring in original position.

Faceplate, subcover & cover can now be added to close strike.

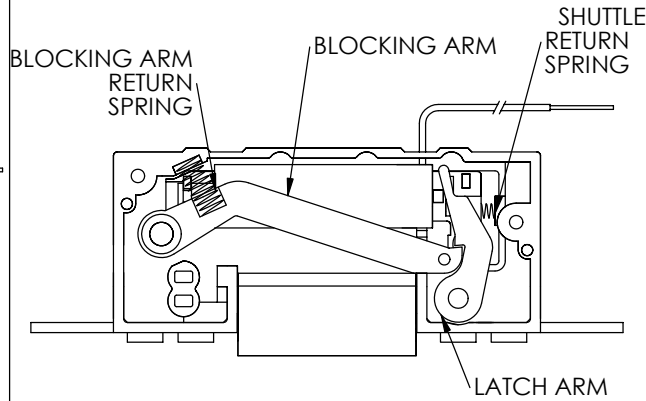
WIRE CODING FOR MONITORED VERSION



MONITOR WIRING
 NC: RED
 NO: WHITE
 COMMON: BLACK

POWER INPUT WIRING
 12VAC: YELLOW/BLACK
 12VDC, 24VAC: RED/BLACK
 24VDC: WHITE/BLACK

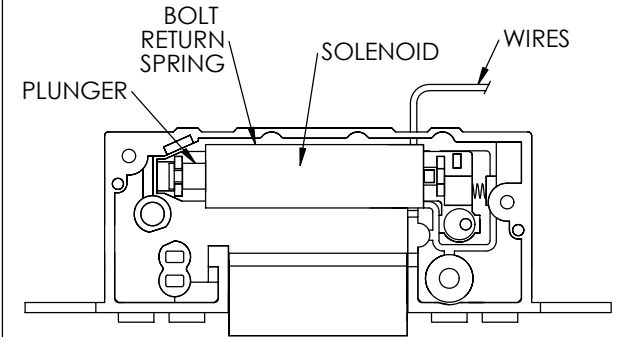
STEP 1



REMOVE SUBCOVER (ONE SCREW)
 REMOVE BACK COVER PLATE (TWO SCREWS)
 CAREFULLY REMOVE BLOCKING ARM SPRING
 REMOVE BLOCKING ARM AND LATCH ARM

STEP 2

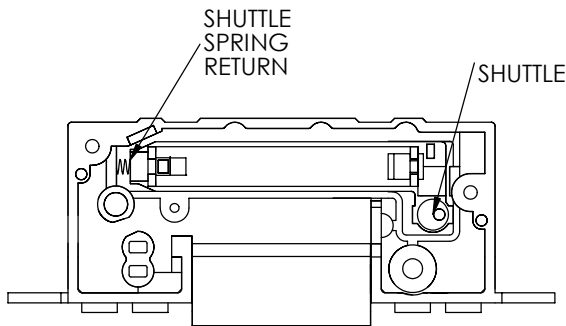
FAIL SECURE



REMOVE SOLENOID

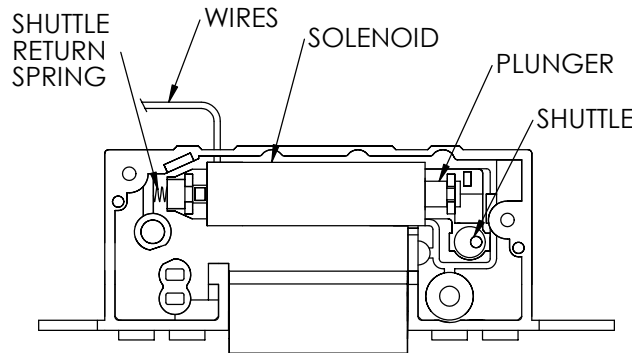
STEP 3

FAIL SAFE



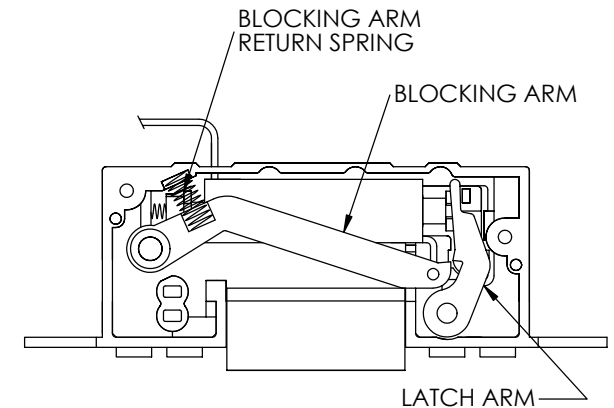
TRANSFER SHUTTLE RETURN SPRING TO OPPOSITE END OF SHUTTLE. NOTE: WHATEVER THE FUNCTION, THE SHUTTLE RETURN SPRING SHOULD ALWAYS BE AT OPPOSITE END TO THE SOLENOID PLUNGER.

STEP 4



REVERSE SOLENOID AND REPLACE, ENSURING CORRECT PLACEMENT AND ALIGNMENT. WITH THE SOLENOID SEATED PROPERLY THE SHUTTLE SHOULD MOVE FREELY.

STEP 5



REPLACE LATCH ARM AND BLOCKING ARM (WITH SPRING)
 REPLACE BACK COVER PLATE
 REPLACE SUBCOVER
 * TEST PRIOR TO INSTALLATION*



**ADAMS RITE
 MANUFACTURING CO.**

260 Santa Fe Street, Pomona, CA 91767
 Phone: (909) 632-2300 Fax: (909) 632-2369

7100 EL-STRIKE FIELD CONVERSION

80-0180-472

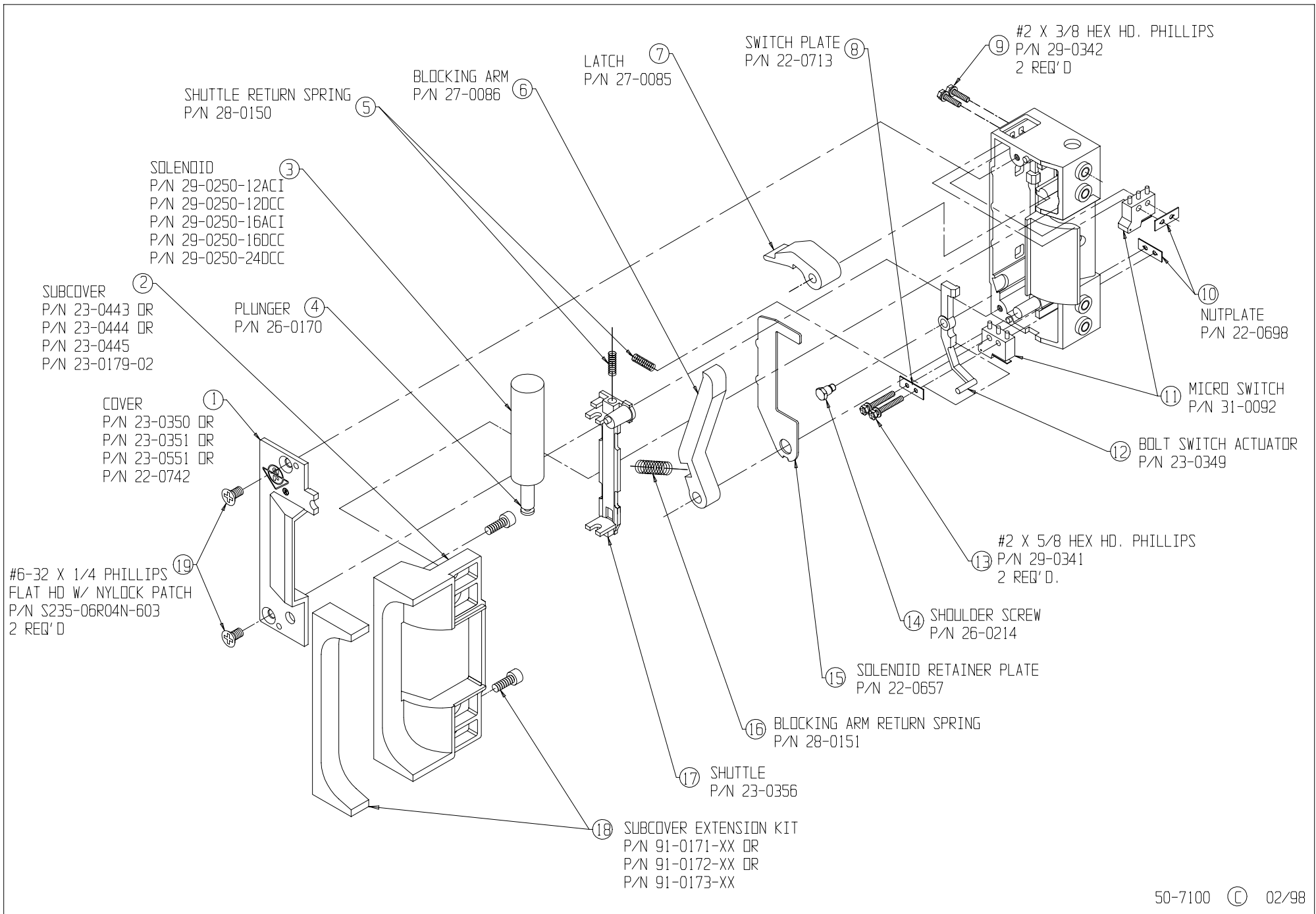
Rev. A

ECN: 10605

Page 1 of 1

Date: 10/22/2003

Apprvd:



50-7100 © 02/98



ADAMS RITE MANUFACTURING COMPANY
260 SANTA FE ST.
POMONA, CA 91767
OFFICE: (909) 632-2300 FAX: (909) 632-2369

7100 SERIES ELECTRIC STRIKE